

# res art



**FONDOVALLE**



0

## nuove sperimentazioni tra arte e tecnologia

New, experimental fusions of art and technology  
De nouvelles expérimentations entre art et technologie  
Neue Versuche zwischen Kunst und Technologie

Superfici in divenire sospese tra realtà e immaginazione, intrise di manualità e artigianalità, ricche di tecnica ed esperienza, si estendono attraverso nuove texture, colori e dimensioni. Res Art interpreta gli originali effetti materici della resina spatolata e lavorata a mano per trasferirli su lastre in gres porcellanato di grande formato. L'intensità e il calore di una materia semplice ma ricca di suggestioni artistiche si concretizza in nuove soluzioni a pavimento e rivestimento, per progetti integrati di grande forza espressiva.

Suspended between reality and imagination, these budding collections - imbued with manual excellence and craftsmanship, rich in technique and experience - gradually grow with the introduction of new textures, colours, and sizes. Res Art recreates all the original texture effects of trowel-applied, hand-worked resin and transfers them to large porcelain stoneware slabs. The intensity and warmth of a simple, yet artistically rich, material is captured to perfect effect in these new floor and wall solutions for high-impact, all-encompassing designs.

Des surfaces en évolution suspendues entre la réalité et l'imagination, imprégnées de manualité et d'artisanalité, riches en technique et en expérience, s'étendent à travers de nouvelles textures, teintes et dimensions. Res Art interprète les effets matiéristes originaux de la résine appliquée à la spatule, et travaillée à la main pour les transférer sur des dalles en grès cérame dans grand format. L'intensité et la chaleur d'une matière simple mais riche en suggestions artistiques se concrétisent à travers de nouvelles solutions pour les sols et les murs, dans le cadre de projets intégrés d'une grande force d'expression.

Entstehende Oberflächen, schwebend zwischen Realität und Vorstellung, geprägt von Handarbeit und Handwerk, reich an Technik und Erfahrung, erstrecken sich durch neue Texturen, Farben und Abmessungen. Res Art interpretiert die originellen materiellen Effekte des gespachtelten und von Hand bearbeiteten Harzes, um sie auf Platten aus Feinsteinzeug im Großformat. Die Intensität und die Farbe einer einfachen aber an künstlerischen Eindrücken reichen Materie konkretisiert sich in neuen Lösungen für Boden- und Wandbeläge, für Projekte mit einer großen Ausdruckskraft.

## texture patinate e profonde, piacevoli al tatto

Intense glossy textures that cry out to be touched  
Des textures patinées et profondes, agréables au toucher  
Mit Patina überzogene und tiefe Texturen mit angenehmer Haptik

Protagoniste delle nuove tendenze, le tonalità di Res Art sono immerse nella profondità di una texture a rilievo patinata e piacevole al tatto. Una mirabile interpretazione della resina nella sua estetica più pura, a tratti quasi cerata, grazie agli effetti di rifrazione della luce, disegna ambienti minimali e ricercati allo stesso tempo. La collezione si compone di una gamma di colori neutri, con accenti caldi e tonalità verdi/azzurre, pensata per dialogare con una ricca varietà di superfici in abbinamento, per costruire spazi di naturale bellezza trasversali a ogni stile.

Shining stars of the latest trends, the Res Art shades lend depth through a highly textured material with a waxy finish that cries out to be touched. A beautiful recreation of resin in its purest form. With light bouncing off the material creating an almost wax-like finish, this line lends designs a minimal yet sophisticated tone. The collection, which features a subtle colour palette with warm accents and green and blue tones, is designed to work with a vast assortment of offerings to create naturally beautiful spaces that go hand in hand with any style.

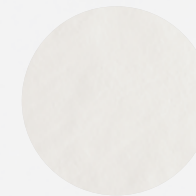
Protagonistes des nouvelles tendances, les tonalités de Res Art sont immergées dans la profondeur d'une texture en relief patinée et agréable au toucher. Une interprétation admirable de la résine dans son esthétique la plus pure, parfois presque cirée, grâce aux effets de la réfraction de la lumière, dessine des espaces à la fois minimaux et raffinés. La collection est composée d'une gamme de couleurs neutres, aux accents chauds et aux nuances vertes/bleu clair, conçue pour dialoguer avec une riche variété de surfaces assorties, pour construire des espaces d'une beauté naturelle transversaux à chaque style.

Als Protagonisten der neuen Trends sind die Farbtöne von Res Art in die Tiefe einer Textur mit patiniertem Relief eingetaucht, das sich angenehm anfühlt. Eine wunderbare Interpretation des Harzes in seiner reinsten Form, dank der Effekte der manchmal beinahe wachsartigen Lichtbrechung, die minimale und gleichzeitig auserlesene Umgebungen zeichnet. Die Kollektion umfasst eine neutrale Farbpalette mit warmen Akzenten sowie Grün-/Blautönen, die für den Dialog mit einer breiten Vielfalt passender Oberflächen konzipiert wurden, um Räume von natürlicher Schönheit zu schaffen, die sich für jeden Stil eignen.





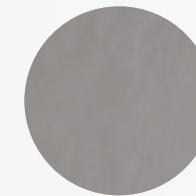
Porcelain stoneware slabs  
120x278 120x120 60x120 cm



TALC



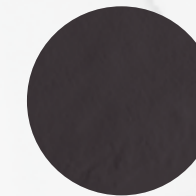
ASH



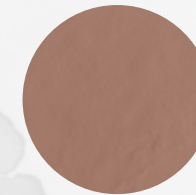
POWDER



MUD



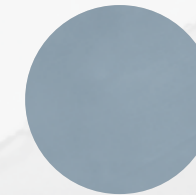
LAVA



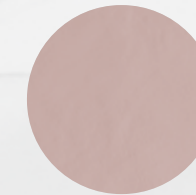
POTTERY



OLIVE



AVIO



CAMEO

## colori densi ridisegnano i contorni dell'abitare

Solid shades that redefine the shapes of living spaces  
Des couleurs denses redessinent les contours du mode de vie  
Kräftige Farben zeichnen die Konturen des Wohnens

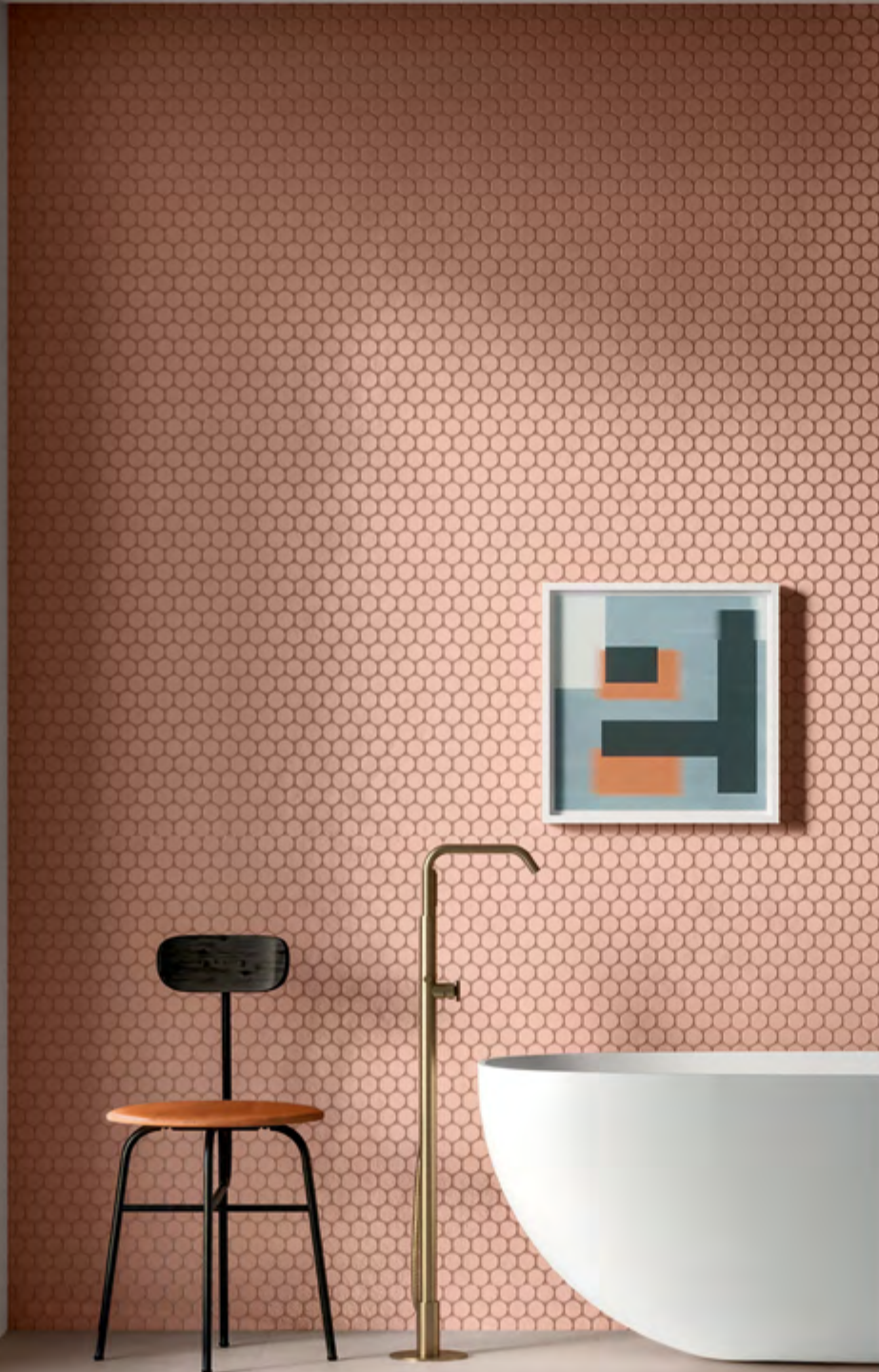
**res art**  
POTTERY / MUD

## sfondi contemporanei per soluzioni creative

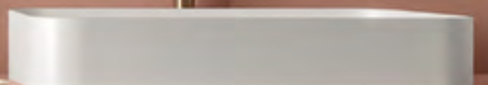
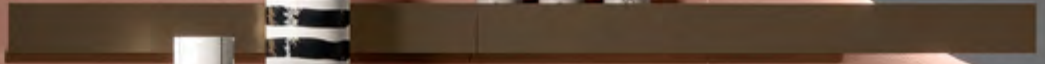
Contemporary background tiles for creative solutions  
Des fonds contemporains pour des solutions créatives  
Moderne Hintergründe für kreative Lösungen

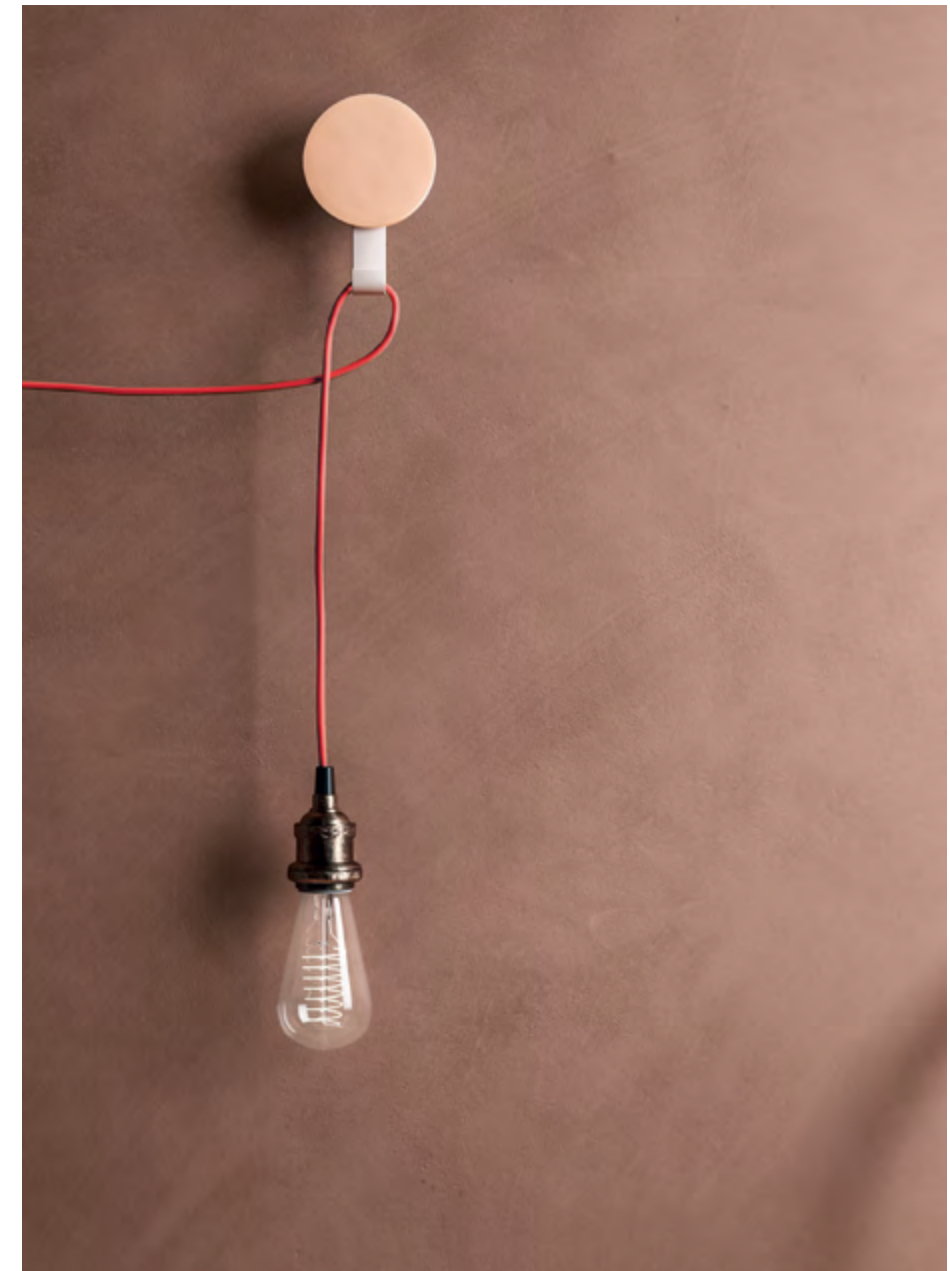
Res Art Mosaico Ball Pottery 28,8x31,2 . 11,34"x12,28"





Res Art Pottery 120x278 . 47,24"x109,45"  
Res Art Mosaico Ball Pottery 28,8x31,2 . 11,34"x12,28"  
Res Art Mud 120x120 . 47,24"x47,24"





Res Art Mud 120x120 . 47,24"x47,24"  
Furniture: Res Art Pottery





res art  
OLIVE

## incontri di forme e materia dal design disinvolto

Form meets matter to casual effect  
Des rencontres de formes et de matières  
avec un design désinvolte  
Begegnung zwischen Formen und Materie  
mit einem zwanglosen Design

Listello Res Art Olive 5x30 . 1,97"x11,81"  
Keynote Amber 60x120 . 23,62"x47,24"



Listello Res Art Olive 5x30 . 1,97"x11,81"  
Keynote Amber 60x120 . 23,62"x47,24"



res art  
AVIO

## visioni d'insieme dal segno eclettico

Eclectic perspectives  
Visions d'ensemble au signe éclectique  
Ansichten eklektischer Art

Res Art Avio 120x278 . 47,24"x109,45"  
Listello Res Art Avio 5x30 . 1,97"x11,81"  
Keynote Cool Grey 80x80 . 31,50"x31,50"





res art  
CAMEO

## ambienti armonici dai contorni vividi e sofisticati

Harmonious interiors with vibrant, sophisticated accents  
Des espaces harmonieux aux contours vifs et sophistiqués  
Harmonische Räume mit lebhaften und raffinierten Konturen

Res Art Cameo 120x278 . 47,24"x109,45"  
Res Art Cameo 120x120 . 47,24"x47,24"



Res Art Cameo 120x278 . 47,24"x109,45"  
Res Art Cameo 120x120 . 47,24"x47,24"

res art  
POWDER

# ampiezza di superfici, pienezza di emozioni

Expanses of material, endless sensations  
L'amplitude de surfaces, une plénitude d'émotions  
Größe der Oberflächen, Fülle der Emotionen

Res Art Powder 120x120 . 47,24"x47,24"  
Komi Natural 40x240 . 15,75"x94,49"





Res Art Powder 120x120 . 47,24"x47,24"  
Komi Natural 40x240 . 15,75"x94,49"





res art  
ASH

## suggerzioni naturali e tattili, di luce e design

Natural beauty, paired with texture, light, and design  
Des suggestions naturelles et tactiles, de lumière et de design  
Natürliche und spürbare Eindrücke, von Licht und Design

Res Art Ash 120x278 . 47,24"x109,45"





Res Art Ash 120x278 . 47,24"x109,45"  
Res Art Ash 60x120 . 23,62"x47,24"  
Dream Jungle 120x278 . 47,24"x109,45"



Res Art Ash 120x278 . 47,24"x109,45"  
Dream Jungle 120x278 . 47,24"x109,45"

res art  
LAVA / TALC

## materiali evoluti per spazi raffinati

Advanced materials for elegant spaces  
Des surfaces évoluées pour des espaces raffinés  
Entwickelte Oberfläche für raffinierte Räume

Res Art Lava 120x278 . 47,24"x109,45"  
Res Art Talc 120x120 . 47,24"x47,24"





36 RES ART

37 RES ART

Res Art Lava 120x278 . 47,24"x109,45"  
Res Art Talc 120x120 . 47,24"x47,24"



Res Art Talc 120x120 . 47,24"x47,24"



# res art

Lastre di ceramica in gres porcellanato - Gruppo Bla UGL  
 Porcelain stoneware slabs - Gruppe Bla UGL  
 Dalles en céramique en grès cérame - Group Bla UGL  
 Keramikplatten aus Feinsteinzeug - Gruppe Bla UGL

## THICKNESS



6,5 mm  
 SELF LEVELING

## SURFACES

**Natural**  
 Rettificato | Rectified |  
 Rectifié | Rektifiziert

## TECH INFO



BS EN 16165\_C >  
 Dry & Wet rubber 4S:  
 on request ≥ 36  
 AS 4586 > P3: on request  
 UNE-ENV 12633 >  
 Class 2: on request



120x278\*  
 47,24"x109,45"



120x120  
 47,24"x47,24"



60x120  
 23,62"x47,24"

\* Lastre realizzate attraverso impasti colorati con colori standard | Slabs produced using coloured body mix available in standard shades

## COLORS



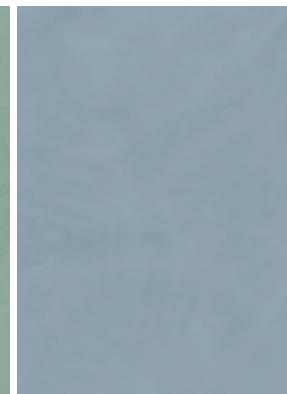
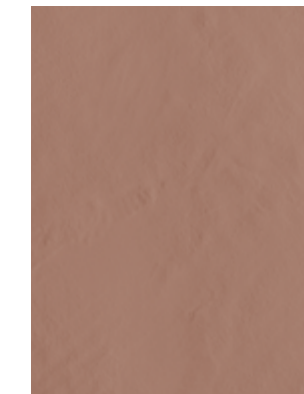
TALC

ASH

POWDER

MUD

LAVA



POTTERY

OLIVE

AVIO

CAMEO

# res art



## SIZES & SURFACES



**120x278\***  
47,24"x109,45"



**120x120**  
47,24"x47,24"



**60x120**  
23,62"x47,24"

**Natural**  
Rettificato | Rectified |  
Rectifié | Rektifiziert

**6,5 mm**

**120x278** . 47,24"x109,45"  
**RES217**

**120x120** . 47,24"x47,24"  
**RES178**

**60x120** . 23,62"x47,24"  
**RES192**

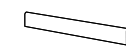


**6,5 mm**  
**5x30** . 1,97"x11,81"  
listello  
**RES259**

**Suggested grout**  
103 . Moon White



TALC



**6,5 mm**  
**8x120** . 3,15"x47,24"  
battiscopa  
**RES199**



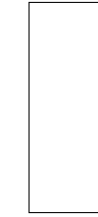
**6,5 mm**  
**33x120x5** . 12,99"x47,24"x1,97"  
gradino lineare LL  
**RES078**



**6,5 mm**  
**33x120x5** . 12,99"x47,24"x1,97"  
gradino angolare LL  
**RES085**



## SIZES & SURFACES



**120x278\***  
47,24"x109,45"



**120x120**  
47,24"x47,24"



**60x120**  
23,62"x47,24"

**Natural**  
Rettificato | Rectified |  
Rectifié | Rektifiziert

**6,5 mm**

**120x278** . 47,24"x109,45"  
**RES218**

**120x120** . 47,24"x47,24"  
**RES179**

**60x120** . 23,62"x47,24"  
**RES193**

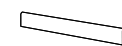


**6,5 mm**  
**5x30** . 1,97"x11,81"  
listello  
**RES260**

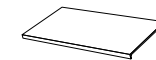
**Suggested grout**  
112 . Medium Grey



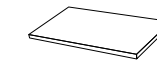
ASH



**6,5 mm**  
**8x120** . 3,15"x47,24"  
battiscopa  
**RES200**



**6,5 mm**  
**33x120x5** . 12,99"x47,24"x1,97"  
gradino lineare LL  
**RES079**



**6,5 mm**  
**33x120x5** . 12,99"x47,24"x1,97"  
gradino angolare LL  
**RES086**

# res art



## SIZES & SURFACES



**120x278\***  
47,24"x109,45"



**120x120**  
47,24"x47,24"



**60x120**  
23,62"x47,24"

**Natural**  
Rettificato | Rectified |  
Rectifié | Rektifiziert

**6,5 mm**

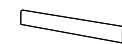
**120x278** . 47,24"x109,45"  
**RES219**

**120x120** . 47,24"x47,24"  
**RES180**

**60x120** . 23,62"x47,24"  
**RES194**

**6,5 mm**  
5x30 . 1,97"x11,81"  
listello  
**RES261**

**Suggested grout**  
119 . London Grey



**6,5 mm**  
**8x120** . 3,15"x47,24"  
battiscopa  
**RES201**

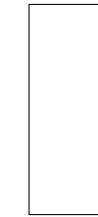


**6,5 mm**  
**33x120x5** . 12,99"x47,24"x1,97"  
gradino lineare LL  
**RES080**



**6,5 mm**  
**33x120x5** . 12,99"x47,24"x1,97"  
gradino angolare LL  
**RES087**

## SIZES & SURFACES



**120x278\***  
47,24"x109,45"



**120x120**  
47,24"x47,24"



**60x120**  
23,62"x47,24"

**Natural**  
Rettificato | Rectified |  
Rectifié | Rektifiziert

**6,5 mm**

**120x278** . 47,24"x109,45"  
**RES220**

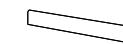
**120x120** . 47,24"x47,24"  
**RES181**

**60x120** . 23,62"x47,24"  
**RES195**

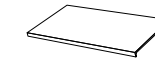
**MUD**

**6,5 mm**  
5x30 . 1,97"x11,81"  
listello  
**RES262**

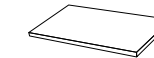
**Suggested grout**  
113 . Cement Grey



**6,5 mm**  
**8x120** . 3,15"x47,24"  
battiscopa  
**RES202**



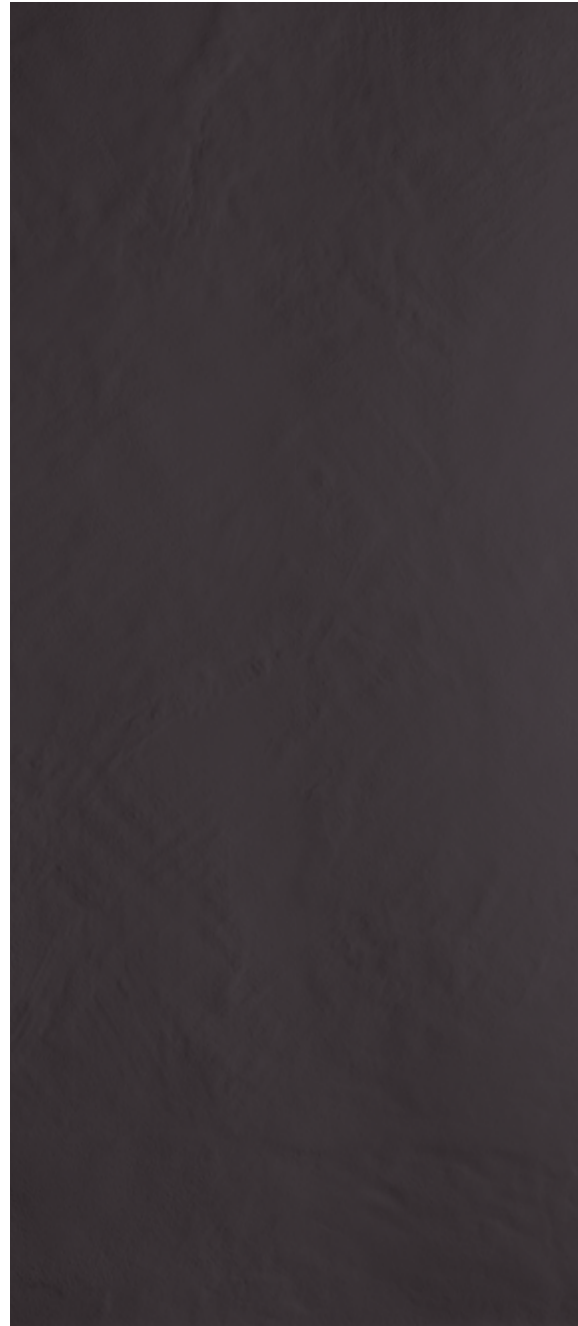
**6,5 mm**  
**33x120x5** . 12,99"x47,24"x1,97"  
gradino lineare LL  
**RES081**



**6,5 mm**  
**33x120x5** . 12,99"x47,24"x1,97"  
gradino angolare LL  
**RES088**



# res art



## SIZES & SURFACES



**120x278\***  
47,24"x109,45"



**120x120**  
47,24"x47,24"



**60x120**  
23,62"x47,24"

**Natural**  
Rettificato | Rectified |  
Rectifié | Rektifiziert

**6,5 mm**

**120x278** . 47,24"x109,45"  
**RES221**

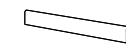
**120x120** . 47,24"x47,24"  
**RES182**

**60x120** . 23,62"x47,24"  
**RES196**



**6,5 mm**  
**5x30** . 1,97"x11,81"  
listello  
**RES263**

**Suggested grout**  
120 . Black



**6,5 mm**  
**8x120** . 3,15"x47,24"  
battiscopa  
**RES203**



**6,5 mm**  
**33x120x5** . 12,99"x47,24"x1,97"  
gradino lineare LL  
**RES082**



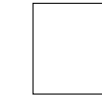
**6,5 mm**  
**33x120x5** . 12,99"x47,24"x1,97"  
gradino angolare LL  
**RES089**



## SIZES & SURFACES



**120x278\***  
47,24"x109,45"



**120x120**  
47,24"x47,24"



**60x120**  
23,62"x47,24"

**Natural**  
Rettificato | Rectified |  
Rectifié | Rektifiziert

**6,5 mm**

**120x278** . 47,24"x109,45"  
**RES222**

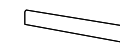
**120x120** . 47,24"x47,24"  
**RES183**

**60x120** . 23,62"x47,24"  
**RES197**

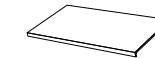


**6,5 mm**  
**5x30** . 1,97"x11,81"  
listello  
**RES264**

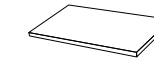
**Suggested grout**  
134 . Silk



**6,5 mm**  
**8x120** . 3,15"x47,24"  
battiscopa  
**RES204**



**6,5 mm**  
**33x120x5** . 12,99"x47,24"x1,97"  
gradino lineare LL  
**RES206**



**6,5 mm**  
**33x120x5** . 12,99"x47,24"x1,97"  
gradino angolare LL  
**RES207**

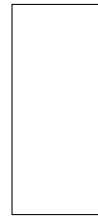
# res art

48 RES ART



**OLIVE**

**SIZES & SURFACES**



**120x278\***  
47,24"x109,45"



**120x120**  
47,24"x47,24"



**60x120**  
23,62"x47,24"

**Natural**  
Rettificato | Rectified |  
Rectifié | Rektifiziert

**6,5 mm**

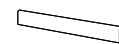
**120x278** . 47,24"x109,45"  
**RES238**

**120x120** . 47,24"x47,24"  
**RES232**

**60x120** . 23,62"x47,24"  
**RES234**

**6,5 mm**  
5x30 . 1,97"x11,81"  
listello  
**RES266**

**Suggested grout**  
115 . River Grey



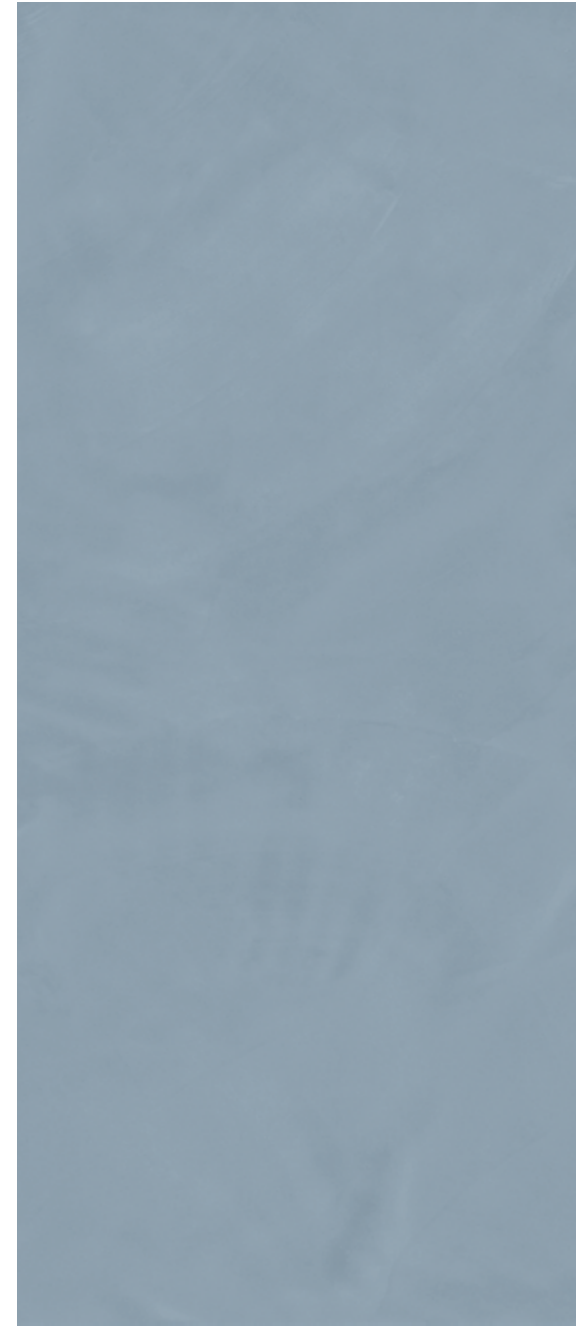
**6,5 mm**  
**8x120** . 3,15"x47,24"  
battiscopa  
**RES248**



**6,5 mm**  
**33x120x5** . 12,99"x47,24"x1,97"  
gradino lineare LL  
**RES250**



**6,5 mm**  
**33x120x5** . 12,99"x47,24"x1,97"  
gradino angolare LL  
**RES252**



**AVIO**

**SIZES & SURFACES**



**120x278\***  
47,24"x109,45"



**120x120**  
47,24"x47,24"



**60x120**  
23,62"x47,24"

**Natural**  
Rettificato | Rectified |  
Rectifié | Rektifiziert

**6,5 mm**

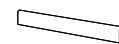
**120x278** . 47,24"x109,45"  
**RES239**

**120x120** . 47,24"x47,24"  
**RES233**

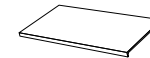
**60x120** . 23,62"x47,24"  
**RES235**

**6,5 mm**  
5x30 . 1,97"x11,81"  
listello  
**RES267**

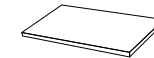
**Suggested grout**  
170 . Crocus Blue



**6,5 mm**  
**8x120** . 3,15"x47,24"  
battiscopa  
**RES249**



**6,5 mm**  
**33x120x5** . 12,99"x47,24"x1,97"  
gradino lineare LL  
**RES251**



**6,5 mm**  
**33x120x5** . 12,99"x47,24"x1,97"  
gradino angolare LL  
**RES253**

49 RES ART

# res art



## SIZES & SURFACES



**120x278\***  
47,24"x109,45"



**120x120**  
47,24"x47,24"



**60x120**  
23,62"x47,24"

**Natural**  
Rettificato | Rectified |  
Rectifié | Rektifiziert

**6,5 mm**

**120x278** . 47,24"x109,45"  
**RES295**

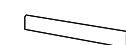
**120x120** . 47,24"x47,24"  
**RES292**

**60x120** . 23,62"x47,24"  
**RES293**



**6,5 mm**  
**5x30** . 1,97"x11,81"  
listello  
**RES300**

**Suggested grout**  
132 . Beige 2000



**6,5 mm**  
**8x120** . 3,15"x47,24"  
battiscopa  
**RES296**



**6,5 mm**  
**33x120x5** . 12,99"x47,24"x1,97"  
gradino lineare LL  
**RES297**



**6,5 mm**  
**33x120x5** . 12,99"x47,24"x1,97"  
gradino angolare LL  
**RES298**

## MOSAICO BALL



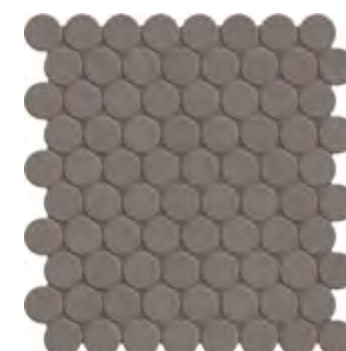
**TALC**  
**6,5 mm**  
**28,8x31,2** . 11,34"x12,28"  
**RES171**



**ASH**  
**6,5 mm**  
**28,8x31,2** . 11,34"x12,28"  
**RES172**



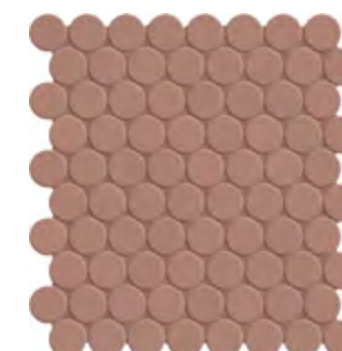
**POWDER**  
**6,5 mm**  
**28,8x31,2** . 11,34"x12,28"  
**RES173**



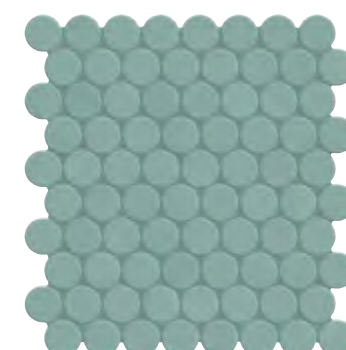
**MUD**  
**6,5 mm**  
**28,8x31,2** . 11,34"x12,28"  
**RES174**



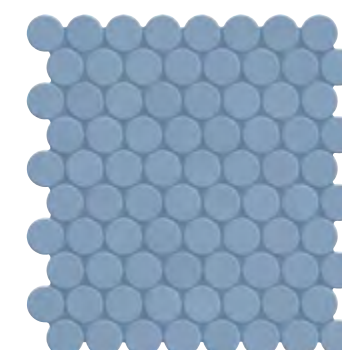
**LAVA**  
**6,5 mm**  
**28,8x31,2** . 11,34"x12,28"  
**RES175**



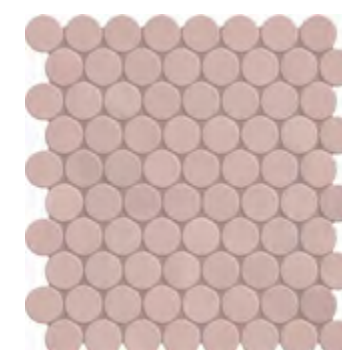
**POTTERY**  
**6,5 mm**  
**28,8x31,2** . 11,34"x12,28"  
**RES176**



**OLIVE**  
**6,5 mm**  
**28,8x31,2** . 11,34"x12,28"  
**RES254**



**AVIO**  
**6,5 mm**  
**28,8x31,2** . 11,34"x12,28"  
**RES255**



**CAMEO**  
**6,5 mm**  
**28,8x31,2** . 11,34"x12,28"  
**RES299**









# caratteristiche tecniche










Technical characteristics | Caracteristiques technique | Technische eigenschaften

Lastre di ceramica in gres porcellanato - Gruppo Bla UGL (UNI EN 14411\_G) | Porcelain stoneware slabs - Gruppe Bla UGL (UNI EN 14411\_G) | Dalles en céramique en grès céram - Group Bla UGL (UNI EN 14411\_G) | Keramikplatten aus Feinsteinzeug - Groupe Bla UGL (UNI EN 14411\_G)

	Metodo di prova Test method Méthode d'essai Prüfmethode	Requisiti prescritti Required value Valeur requise Vorgeschriebener Wert	Risultato Results Résultat Ergebnis		Valutazione Valutation Évaluation Bewertung
			L < 120 cm	L ≥ 120 cm	
 Lunghezza e larghezza   Length and width   Longueur et largeur   Länge und Breite  Spessore   Thickness   Epaisseur   Stärke  Rettilinearità degli spigoli   Edge straightness   Rectitude des arêtes   Rechtlinigkeit der Kanten  Ortogonalità   Rectangularity   Orthogonalité   Rechtwinkligkeit  Planarità   Planarity   Planéité   Rechtwinkligkeit	UNI EN ISO 10545-2	± 0,6% ± 2 mm	± 0,6% ± 0,5 mm	± 0,6% ± 0,9 mm	Conforme   Compliant   Conforme   Konform
		± 5% ± 0,5 mm	± 5% ± 0,5 mm	± 3% ± 0,5 mm	Conforme   Compliant   Conforme   Konform
		± 0,5% ± 1,5 mm	± 0,5% ± 1,5 mm	± 0,5% ± 1,5 mm	Conforme   Compliant   Conforme   Konform
		± 0,5% ± 2 mm	± 0,5 % ± 1 mm	± 0,5 % ± 2 mm	Conforme   Compliant   Conforme   Konform
		± 0,5% ± 2 mm	± 0,5 % ± 2 mm	± 0,5 % ± 2 mm	Conforme   Compliant   Conforme   Konform
Qualità della superficie   Surface quality   Qualité de la surface   Oberflächenqualität		≥ 95%	Conforme   Compliant   Conforme   Konform	Conforme   Compliant   Conforme   Konform	
 Assorbimento d'acqua   Water Absorption   Absorption d'eau   Wasseraufnahme	UNI EN ISO 10545-3	≤ 0,5%		≤ 0,1%	Conforme   Compliant   Conforme   Konform
 Resistenza alla flessione   Bending strength   Resistance a la flexion   Biegezugfestigkeit	UNI EN ISO 10545-4	Modulo di rottura Modulus of rupture Module de rupture Bruchlast  R average ≥ 35 N/mm <sup>2</sup> R min ≥ 32 N/mm <sup>2</sup>	h = 6,5 mm; R ≥ 50 N/mm <sup>2</sup>		Conforme   Compliant   Conforme   Konform
		Sforzo di rottura Breaking strength Effort de rupture Bruchkraft  h ≥ 7,5 mm; S > 1300 N h < 7,5 mm; S > 700 N	h = 6,5 mm; S > 700 N		Conforme   Compliant   Conforme   Konform
 Resistenza all'abrasione profonda   Deep abrasion resistance   Résistance à l'abrasion profonde   Tiefenverschleißbeständigkeit	UNI EN ISO 10545-6	V ≤ 175 mm <sup>3</sup>	h = 6,5 mm; V ≤ 130 mm <sup>3</sup>		Conforme   Compliant   Conforme   Konform
 Resistenza agli sbalzi termici   Resistance to thermal shock   Résistance aux écarts de température   Temperaturwechselbeständigkeit	UNI EN ISO 10545-9	Resistente   Resistant   Résistant   Widerstandsfähig	Resistente   Resistant   Résistant   Widerstandsfähig		Conforme   Compliant   Conforme   Konform
 Resistenza al gelo   Frost resistance   Résistance au gel   Frostbeständigkeit	UNI EN ISO 10545-12	Resistente   Resistant   Résistant   Widerstandsfähig	Ingelivo   Frost proof   Ingelif   Frostsicher		Conforme   Compliant   Conforme   Konform

54 RES ART

Lastre di ceramica in gres porcellanato - Gruppo Bla UGL (UNI EN 14411\_G) | Porcelain stoneware slabs - Gruppe Bla UGL (UNI EN 14411\_G) | Dalles en céramique en grès céram - Group Bla UGL (UNI EN 14411\_G) | Keramikplatten aus Feinsteinzeug - Groupe Bla UGL (UNI EN 14411\_G)

	Metodo di prova Test method Méthode d'essai Prüfmethode	Requisiti prescritti Required value Valeur requise Vorgeschriebener Wert	Risultato Results Résultat Ergebnis		Valutazione Valutation Évaluation Bewertung	
			L < 120 cm	L ≥ 120 cm		
 Resistenza all'attacco chimico   Chemical resistance   Resistance a l'attaque chimique   Beständigkeit gegen chemikalien  Acidi e basi ad alta e bassa concentrazione   High- and low-concentration acids and bases   Acides et bases à haute et basse concentration   Säuren und Basen mit hoher und niedriger Konzentration	UNI EN ISO 10545-13	Valori dichiarati   Declared values   Valeurs déclarées   Erklärte Werte  B minimo   B minimum   B minimum   Mind. B		<b>A; LA; HA</b>	Conforme   Compliant   Conforme   Konform	
 Resistenza alle macchie   Stain resistance   Resistance aux taches   Fleckenbeständigkeit	UNI EN ISO 10545-14	Minimo Classe 3   Minimum Class 3   Classe 3 minimale   Mindestklasse 3		Valori dichiarati   Declared values Valeurs déclarées   Erklärte Werte	Conforme   Compliant   Conforme   Konform	
 Resistenza dei colori alla luce   Colour resistance to light exposure   Résistance des couleurs à la lumière   Farbechtheit unter Lichteinfluss	DIN 51094	Resistente   Resistant   Résistant   Widerstandsfähig		Resistente   Resistant   Résistant   Widerstandsfähig	Conforme   Compliant   Conforme   Konform	
 Resistenza allo scivolamento a piedi nudi   Slip resistance with bare feet   Résistance au glissement pieds nus   Rutschfestigkeit bei nackten Füßen	DIN EN 16165_A	Da A a C From A to C De A à C Von A bis C		<b>A</b>	Conforme   Compliant   Conforme   Konform	
 Resistenza allo scivolamento a piedi calzati   Slip resistance with shod feet   Résistance au glissement des chaussures   Rutschfestigkeit bei beschuhten Füßen	DIN EN 16165_B	Da R9 a R13 From R9 to R13 De R9 à R13 Von R9 bis R13		<b>R 9</b>	Conforme   Compliant   Conforme   Konform	
		Resistenza allo scivolamento DCOF   Skid resistance DCOF Résistance au glissement DCOF   Rutschhemmung DCOF	ANSI A 137.1:2012	> 0,42 wet	> 0,42 wet	Conforme   Compliant   Conforme   Konform
			BCRA	> 0,40 dry leather > 0,40 wet rubber	> 0,40 dry > 0,40 wet	Conforme   Compliant   Conforme   Konform
 Resistenza allo scivolamento PENDULUM   Skid resistance PENDULUM   Résistance au glissement PENDULUM   Rutschhemmung PENDULUM	BS EN 16165_C	<b>on request ≥ 36</b>		<b>dry rubber 4S: ≥ 36* wet rubber 4S: on request ≥ 36*</b>	Conforme   Compliant   Conforme   Konform	
		AS 4586	<b>on request P3</b>		<b>P3: on request**</b>	Conforme   Compliant   Conforme   Konform
		UNE-ENV 12633	<b>on request Class 2</b>		<b>Class 2 on request**</b>	Conforme   Compliant   Conforme   Konform
 Reazione al fuoco   Fire reaction   Résistance au feu   Feuerfestigkeit	UNI EN 13501-1	Resistente   Resistant   Résistant   Widerstandsfähig		Resistente A1 FL Resistant A1 FL Résistant A1 FL Widerstandsfähig A1 FL	Conforme   Compliant   Conforme   Konform	

\* Con trattamento su richiesta. Valore da verificare su ogni singolo lotto produttivo | With treatment available on request. Check rating for each production batch | Avec traitement sur demande. Valeur à vérifier sur chaque lot de production | Auf Anfrage mit Behandlung. Wert bei jeder einzelnen Charge des Produktes zu prüfen

\*\* Valori dichiarati ottenuti da test di laboratorio. Possono subire variazioni in base al lotto produttivo | Stated values are obtained from laboratory tests. They may vary depending on the production batch | Valeurs déclarées basées sur des essais en laboratoire. Peuvent subir des variations en fonction du lot de production | Die angegebenen Werte basieren auf Labortests. Es kann von Charge zu Charge zu Abweichungen kommen

55 RES ART

Maggiori informazioni per consigli di posa e manutenzione del prodotto su: [www.fondovalle.it](http://www.fondovalle.it)  
 For more information about laying and product maintenance, please visit: [www.fondovalle.it](http://www.fondovalle.it) | Pour de plus amples informations relatives aux conseils de pose et à l'entretien du produit, visitez le site : [www.fondovalle.it](http://www.fondovalle.it) | Weitere Produktinfos und Verlege- und Wartungsratschläge siehe: [www.fondovalle.it](http://www.fondovalle.it)



Ceramics of Italy

AD: Marketing Dept.

06/2023

© Ceramica Fondovalle S.p.A.

**È vietata la riproduzione, totale e parziale del catalogo in tutte le sue forme.**

Reproduction of this printed catalogue totally or partially, is forbidden.

**Ceramica Fondovalle si riserva di apportare, qualora lo ritenesse opportuno, eventuali modifiche di natura tecnica o formale ai dati riportati in questo strumento. I colori sono puramente indicativi.**

Ceramica Fondovalle reserves the right, when it deems necessary, to make technical and formal changes to the data included herein. The colours are purely illustrative.



**ITALCER - WINNER OF THE  
2022 SUSTAINABILITY AWARD**

# FONDOVALLE

**Ceramica Fondovalle S.p.A.**

Via Rio Piodo, 12  
41053 Torre Maina, (MO) Italy  
T. +39 0536 934211  
F. +39 0536 934250  
[www.fondovalle.it](http://www.fondovalle.it)

A company part of

**ITALCER**  
GROUP  
DESIGN SURFACES