

Chymia

by Laboratorio Avallone



MU
TIN
A

Chymia[®]

by Laboratorio Avallone

Bianco e Nero

Chymia evoca il processo alchemico di trasformazione della materia. Una metamorfosi che si sviluppa grazie alla volontà di esplorare e spingersi oltre i suoi confini. Il progetto prende vita attraverso la collaborazione con Laboratorio Avallone, realtà milanese guidata da Gennaro Avallone che si sviluppa sul terreno multidisciplinare delle arti applicate, coniugando i linguaggi di pittura e scultura per dare vita a oggetti e componenti d'arredo.

Chymia costituisce un racconto inedito sul bianco e il nero, sviluppato con l'obiettivo di superare le referenze classiche per ridare forza e valore di originalità alla ceramica, con esiti inaspettati.

La collezione si muove tra grafica e gestualità, tra i due estremi del bianco e del nero, in cui si combinano trame segniche e materiche che tracciano luce e ombra in superficie. È il nero distintivo delle opere di Gennaro Avallone che genera ogni creazione, il nero delle patine scure, delle pitture pompeiane, delle chine cinesi, dei vasi di Paestum o della lava incandescente arsa e fusa. È un nero antico e primitivo che si identifica in un simbolismo primordiale e originario. In questo processo creativo il bianco esiste rispetto al nero ed emerge per contrapposizione con lo spazio circostante. Le due dimensioni cromatiche non sono però mai disgiunte tra loro, ma coesistono nella loro dualità.

Black & White

Chymia evokes the alchemical process of transformation of raw material. A metamorphosis that develops by the will to explore and overcome the limits of matter. The project came to life through the collaboration with Laboratorio Avallone, Milano-based studio led by Gennaro Avallone, whose research reaches into the applied arts, drawing on the arts of painting and sculpture to create unique and very special objects of contemporary furnishing.

Chymia consists of a brand new interpretation of black and white, developed with the aim of making a break with traditional styles, to restore strength and an original quality to ceramic as a material, with unexpected outcomes.

The collection consists of a series that fluctuates between the discipline of graphic design and the expressive gestures of mark-making as well as between the two extremes of black and white, in which symbols and textures are combined to create patterns of light and shadow on the surface. Black forms the basis: in the distinctive black of Gennaro Avallone synchronicity takes place between evocation and abstraction. The shades of black originate from Pompeian paintings, Indian ink, the superb black of the vases excavated in Paestum or from the black of incandescent molten lava – there are abundant references and synergies. Black and white are never separate but co-exist.

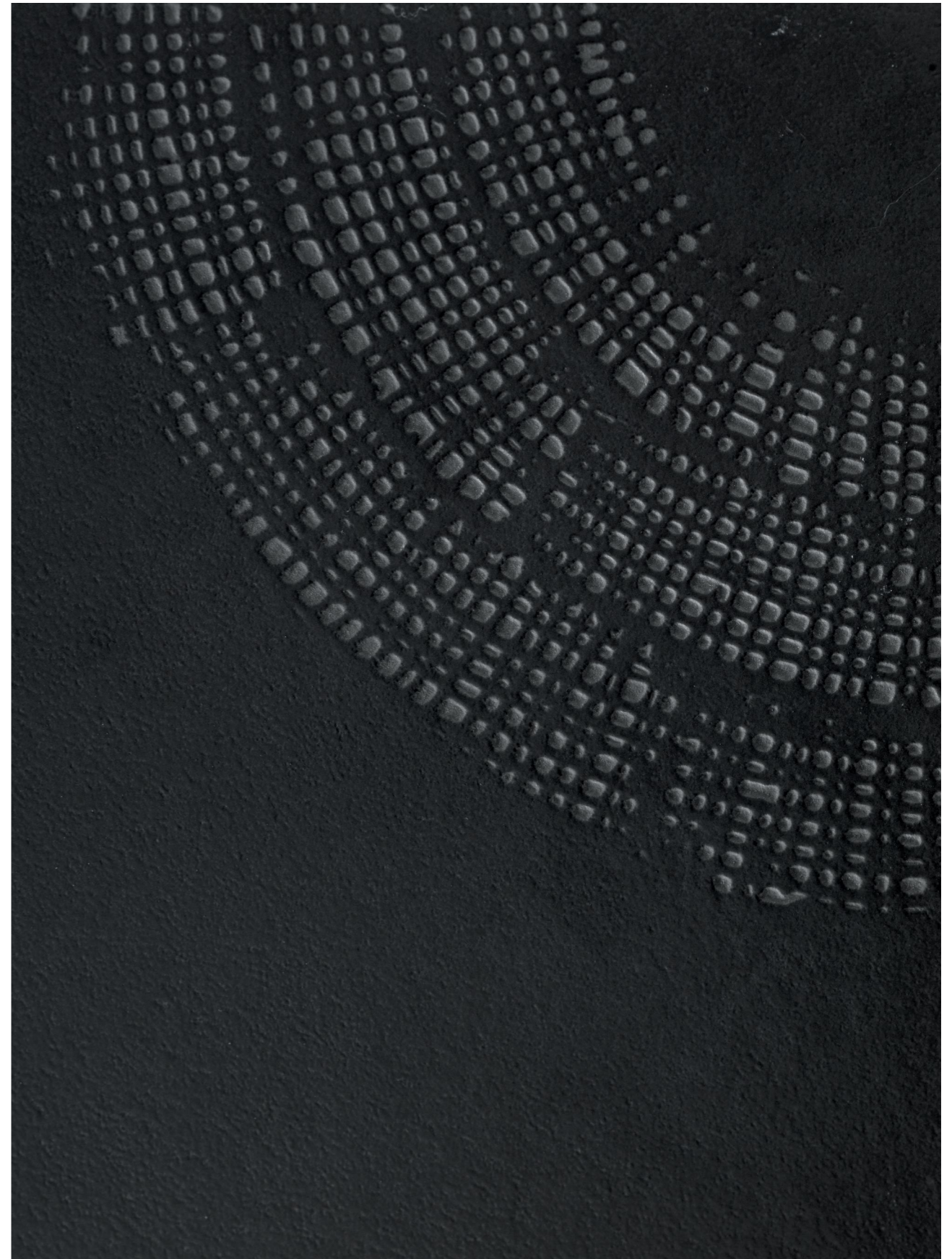


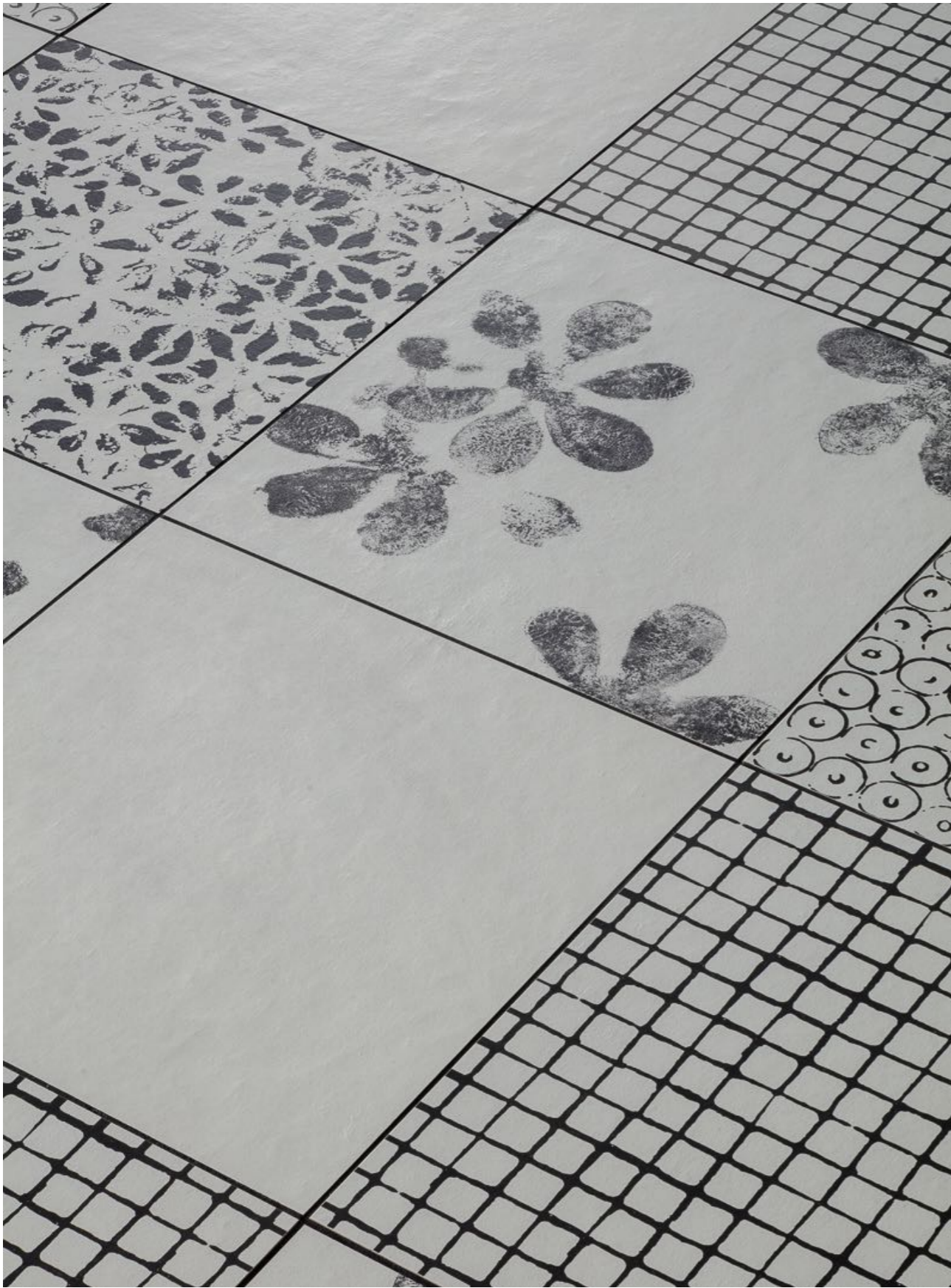
Un'affinità elettiva lega Mutina e Laboratorio Avallone da oltre vent'anni, una sintonia che ci porta a condividere l'intento di guardare alla ceramica esaltandone le qualità intrinseche. La materia è per me un tramite, è quella trasformazione alchemica in cui l'esperienza creativa si manifesta in tutta la sua complessità. Vorrei che artista e opera fossero considerati nella loro integrità, in un fare connotato da una stretta relazione tra pensiero, progetto e tecnica, qui con la sostanziale capacità metamorfica della terra da cui ha origine Chymia.

There has been an elective affinity between Mutina and Laboratorio Avallone for over twenty years, a harmony that enables us to share our passion for the intrinsic qualities of ceramics. Materials for me are a means to an end and have come to represent that alchemical transformation when the skills of designing and creating fuse in all their complexity. I would like artists and their creations to be considered in their entirety, taking into account the close relationship between the creative thought, the design and the technique, here with the significant metamorphic ability of earth from which Chymia originated.

Gennaro Avallone

The collection





Inspirations

Chymia + Accents

Il mondo grafico di Chymia, declinato nei toni del bianco e nero, viene affiancato alle pitture colorate e ai materiali dalla texture calda e naturale della collezione Accents, disegnata da OEO Studio. In questo modo, due progetti caratterizzati da una visione creativa ed estetica complementari vengono combinati in modo inedito, dando vita a una serie di suggestioni di stile capaci di rappresentare al meglio l'universo Mutina.

Chymia + Accents

The graphics of Chymia, in shades of black and white, is teamed with the coloured paints and the warm, natural textures of the materials from the Accents collection, designed by OEO Studio. Two projects characterised by a complementary style and creative vision are thus combined in a novel way to create a series of appealing looks that are a perfect expression of the Mutina universe.







Floor: Chymia Teorema White.
Wall: Accents Pebbles matt paint and skirting L dark oak.



Floor: Chymia Drops Black, Drops White. **Wall:** Accents Clay matt paint.
Ceiling: Accents Pearl matt paint. **Chimney:** Accents Coal matt paint.





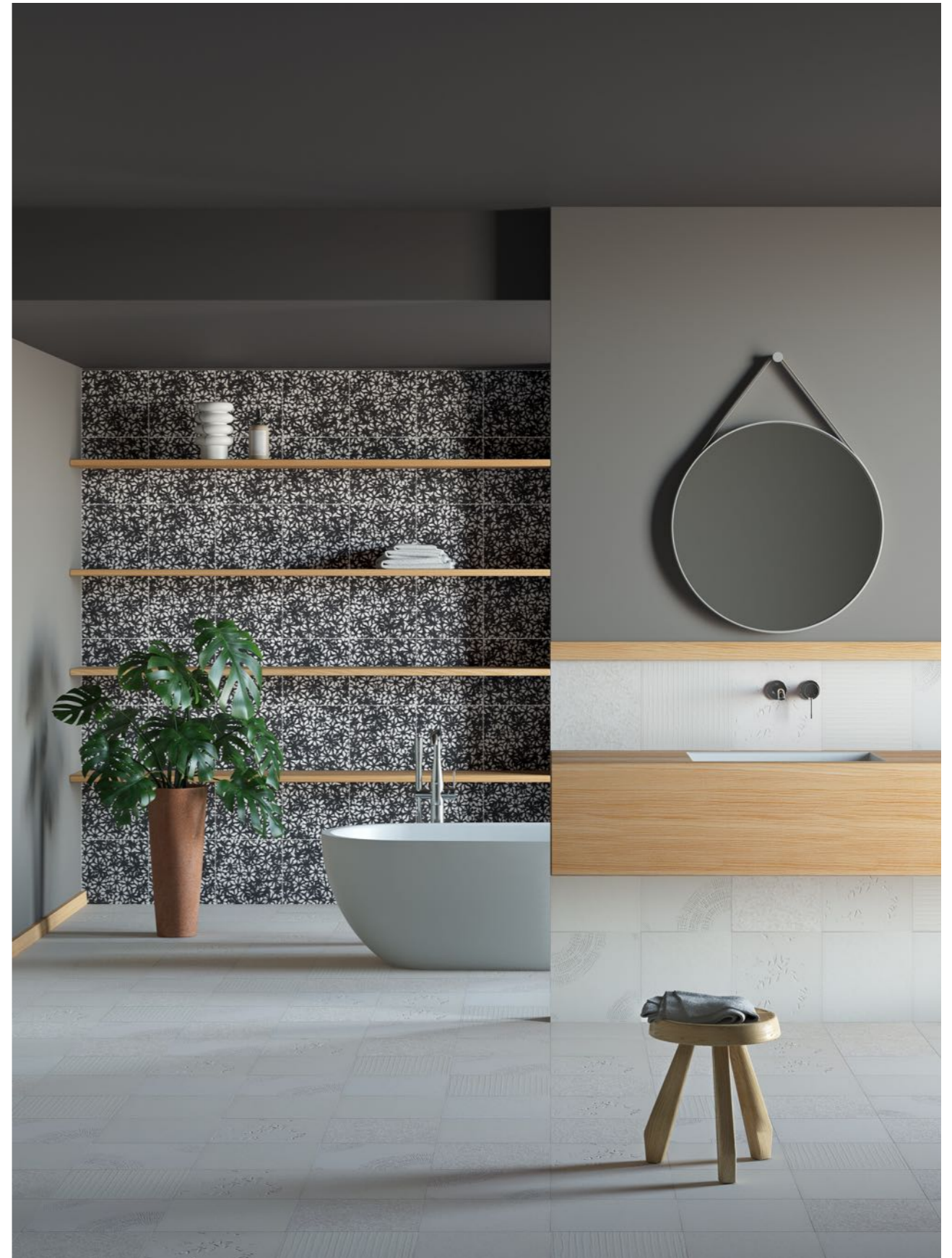


Floor: Chymia Tassello Black. **Wall:** Chymia Flat White, Ophelia White + Accents Slate matt paint. **Ceiling:** Accents Pearl matt paint.

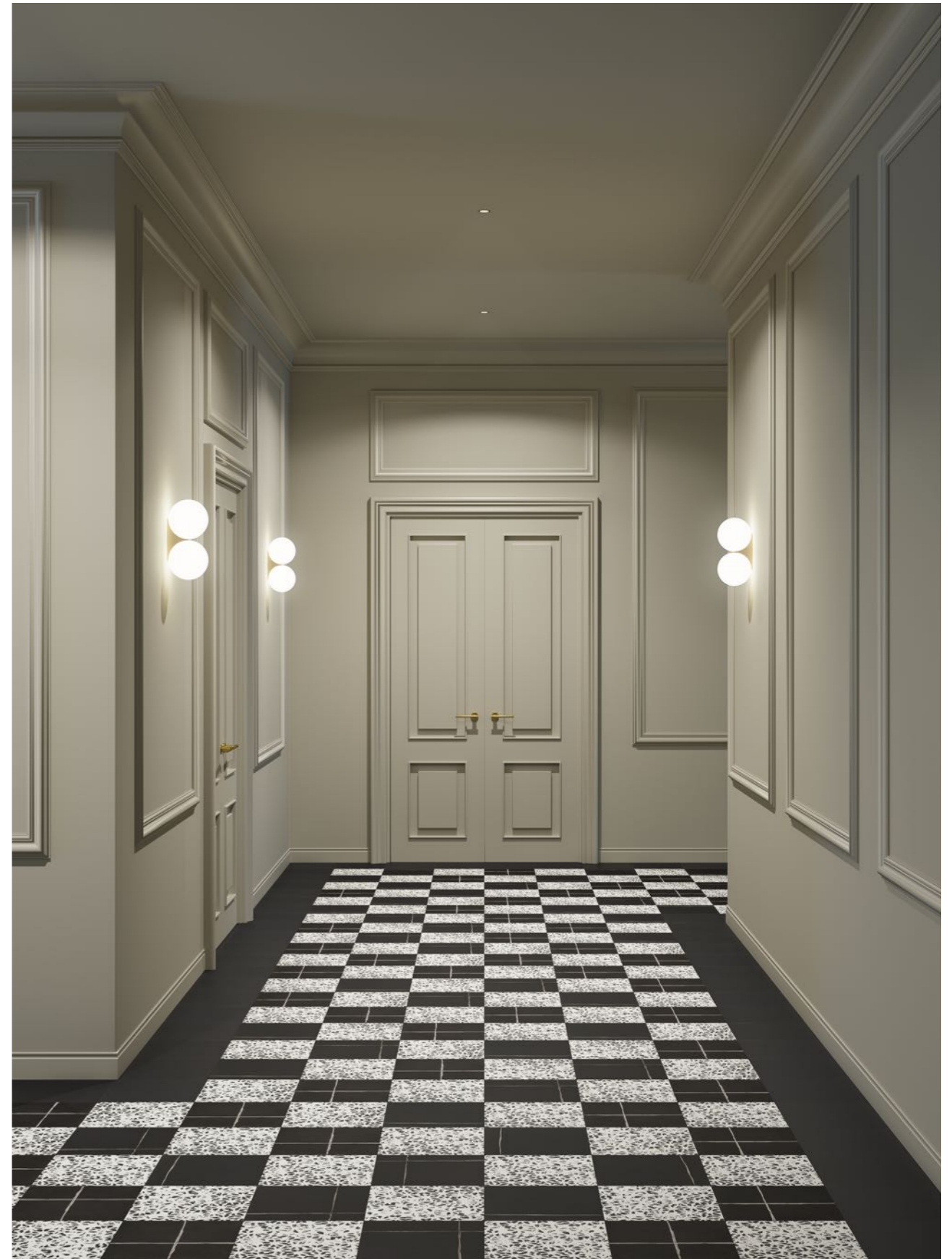




Floor: Chymia Mix 1 White.
Wall: Accents Moss matt paint and rectangular skirting light oak.



Floor: Chymia Mix 1 White. **Walls:** Chymia Bloom Black, Mix 1 White + Accents Moss matt paint and rectangular skirting light oak. **Ceiling:** Accents Coal matt paint.



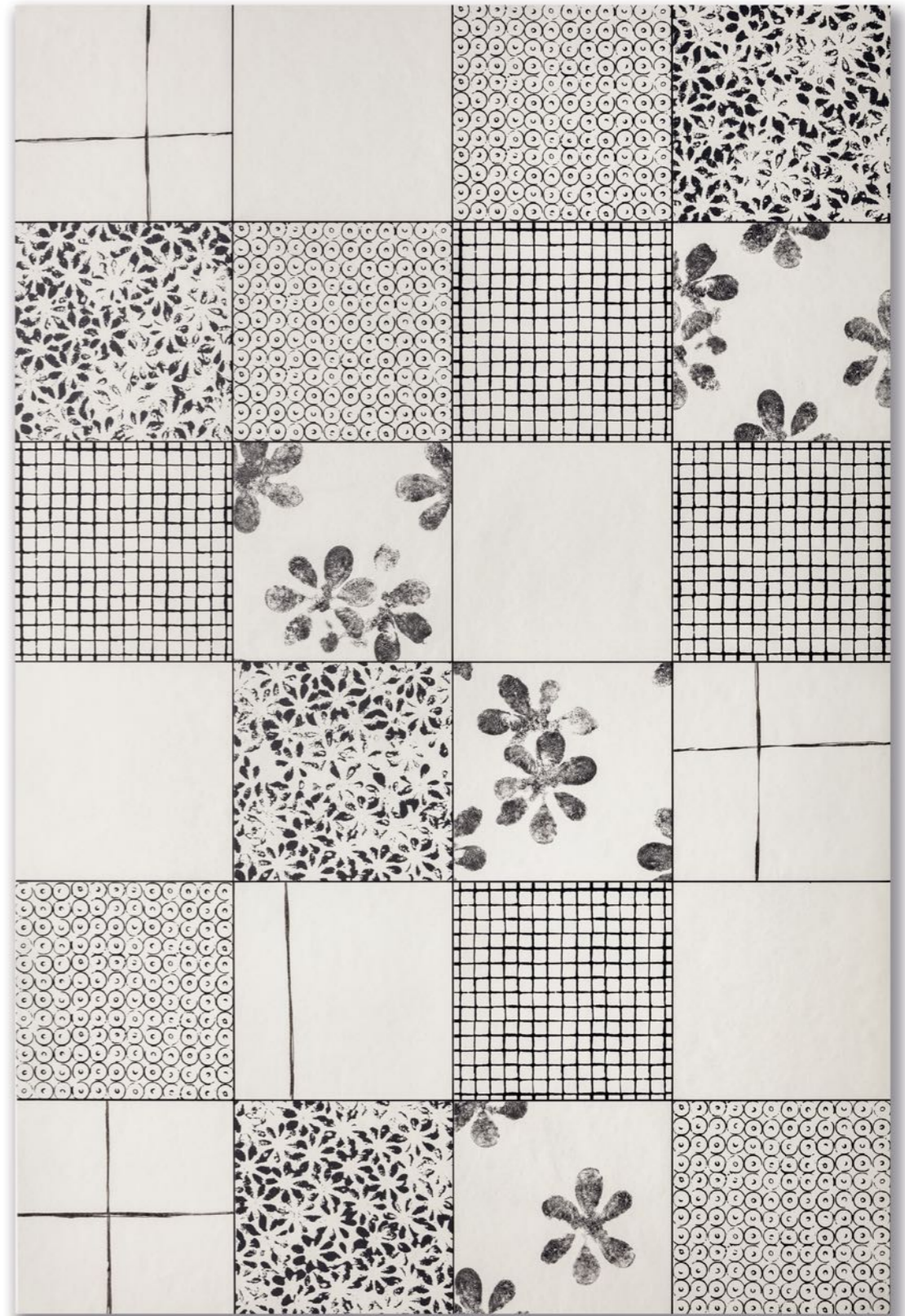
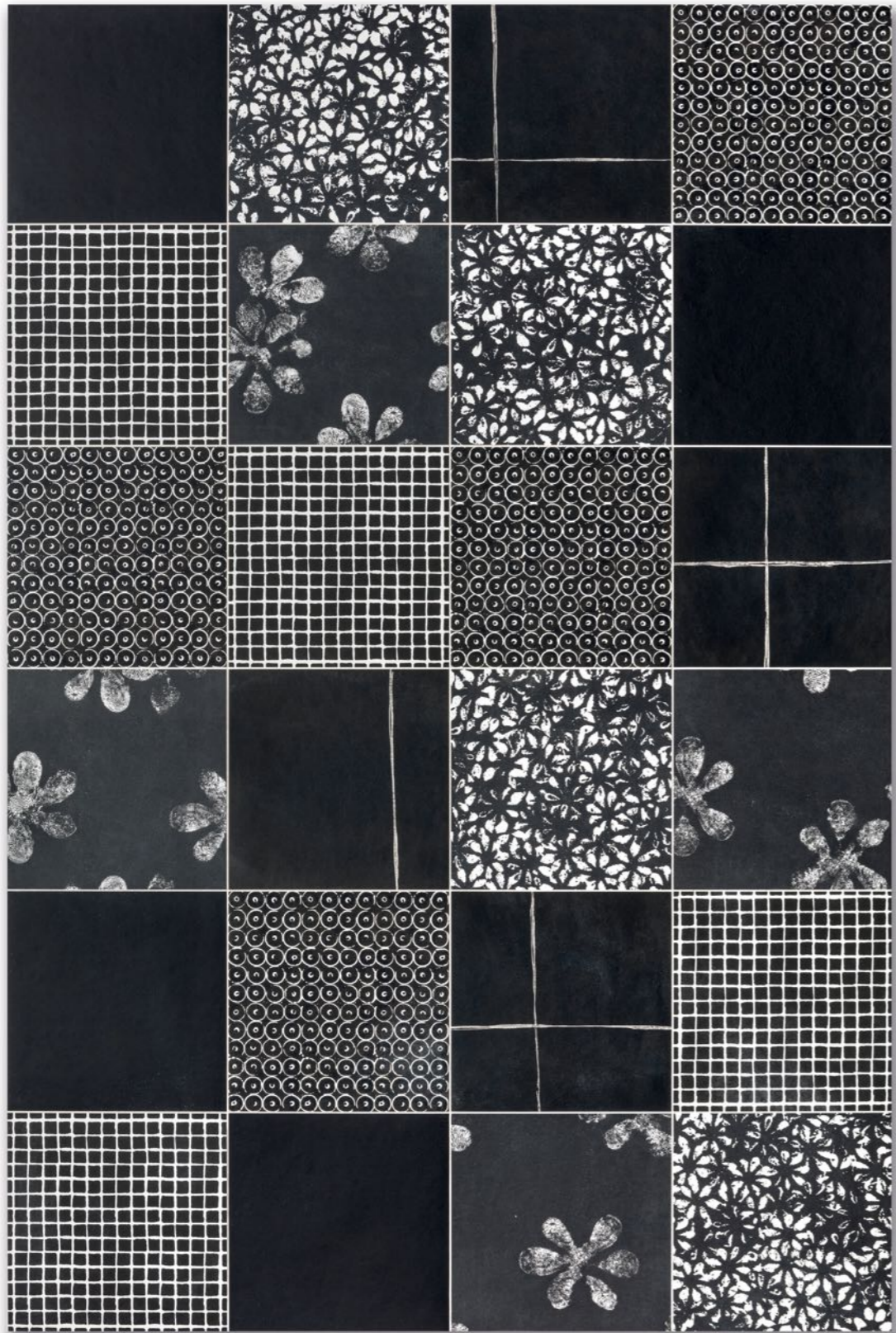


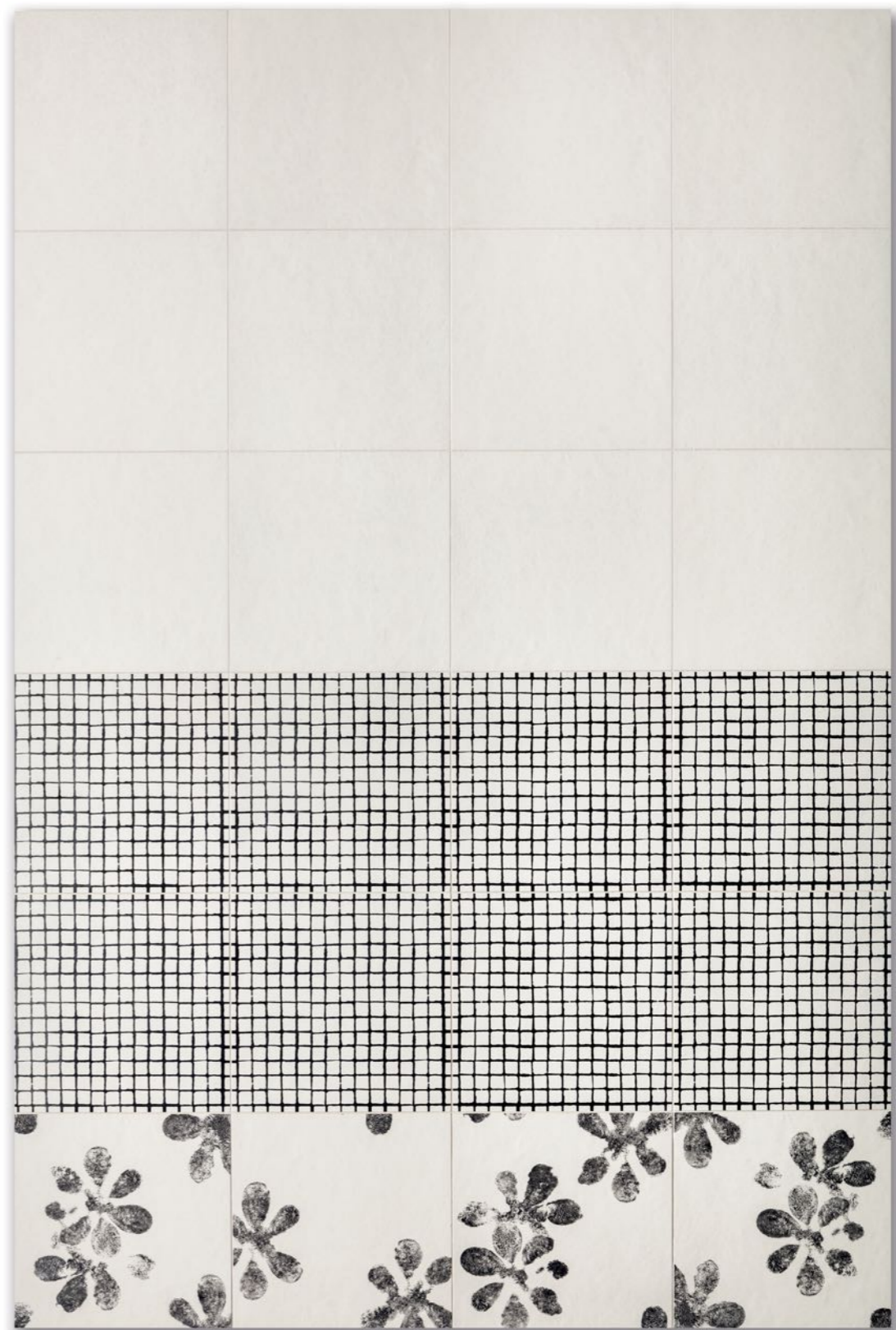


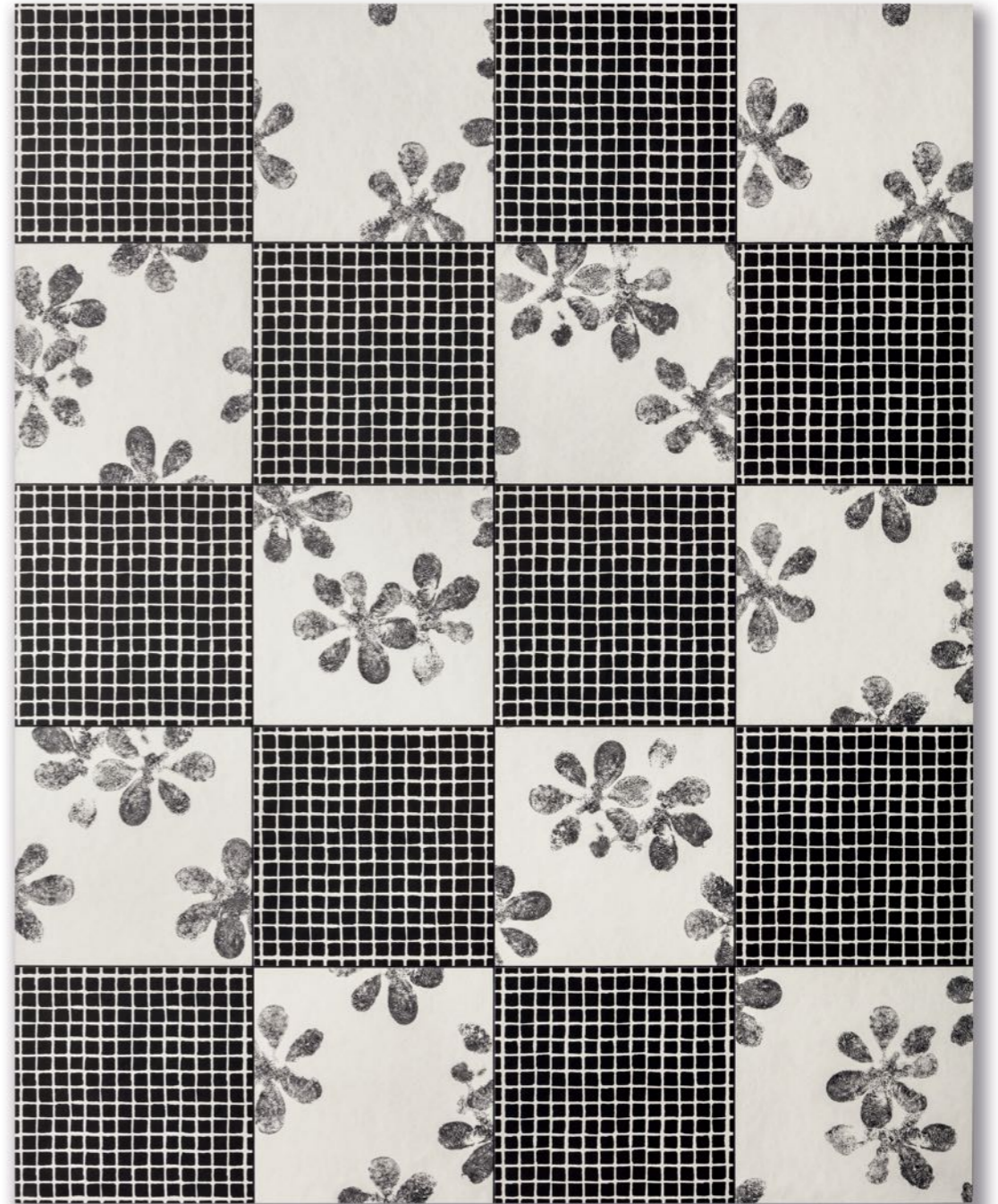
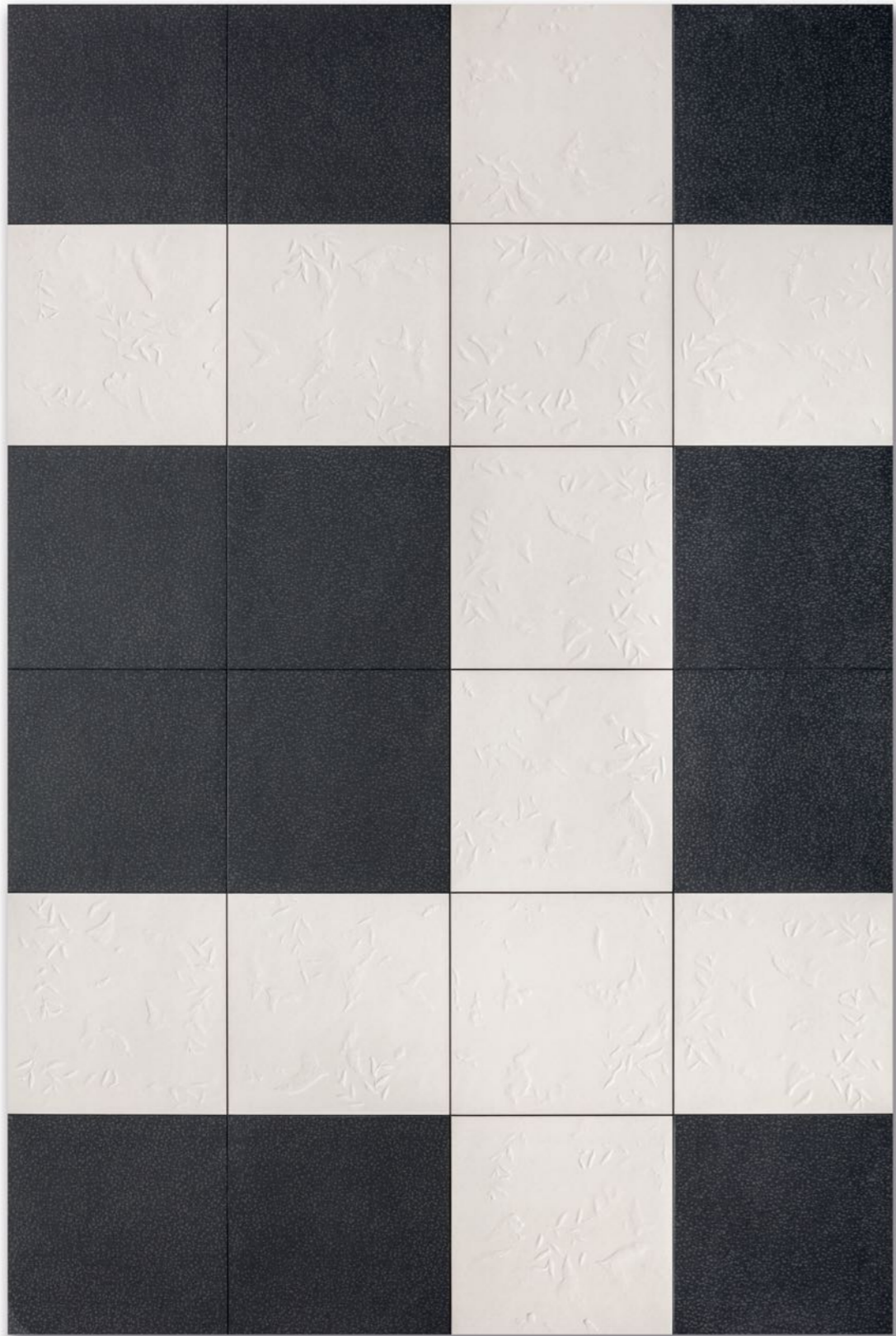
Floor: Chymia Flat Black, Ophelia Black.
Wall: Chymia Ophelia White + Accents skirting L dark oak.

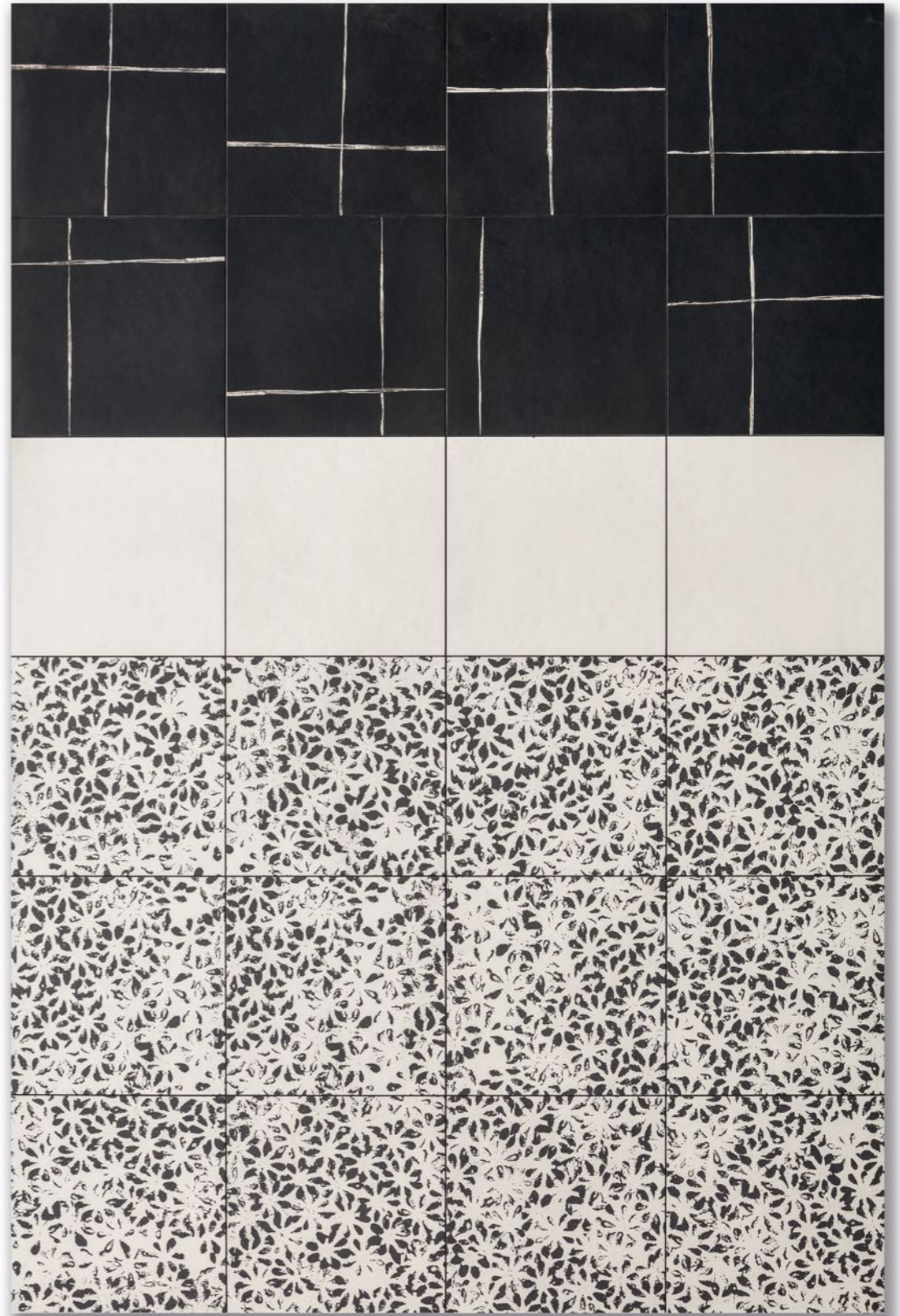
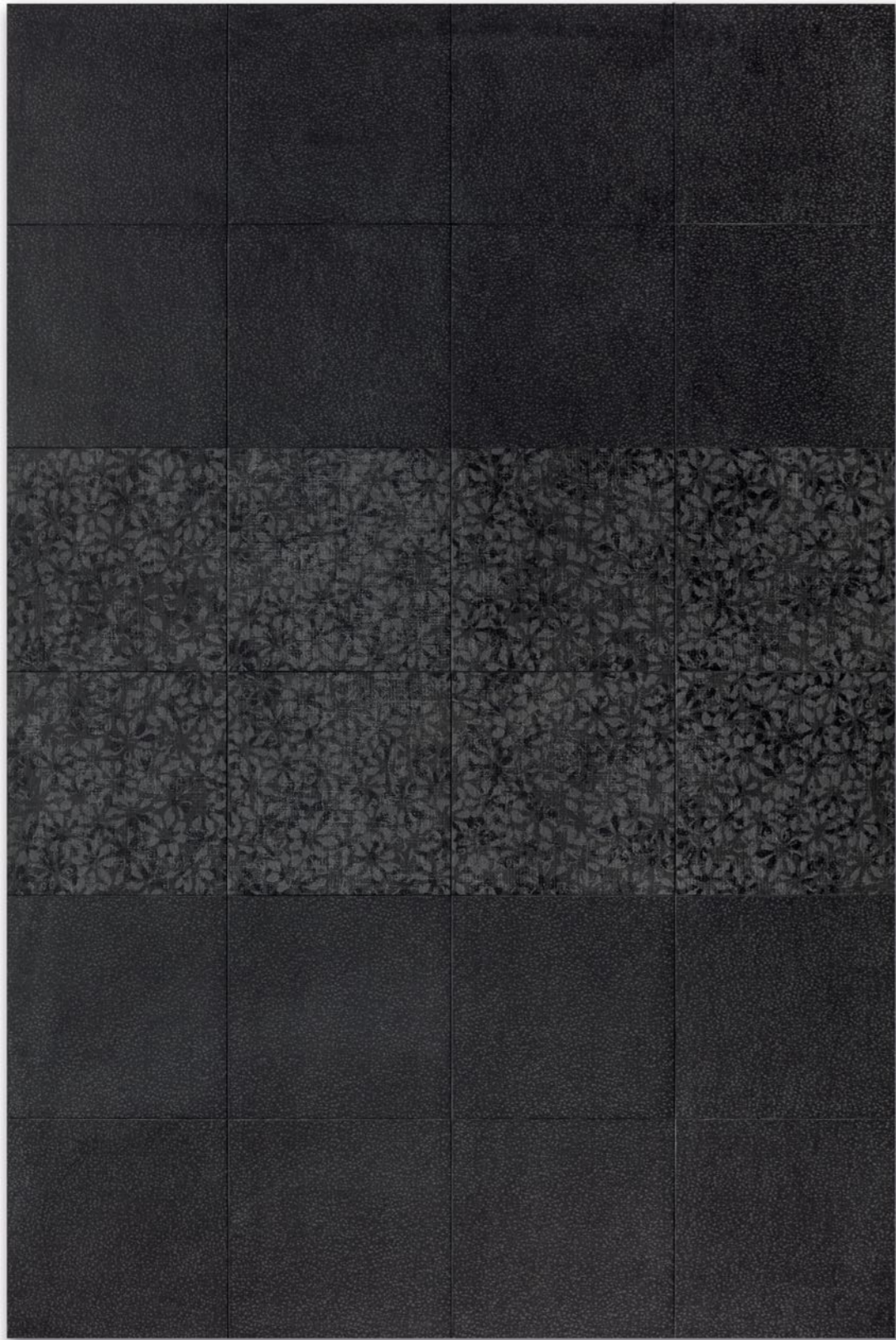
Suggestions





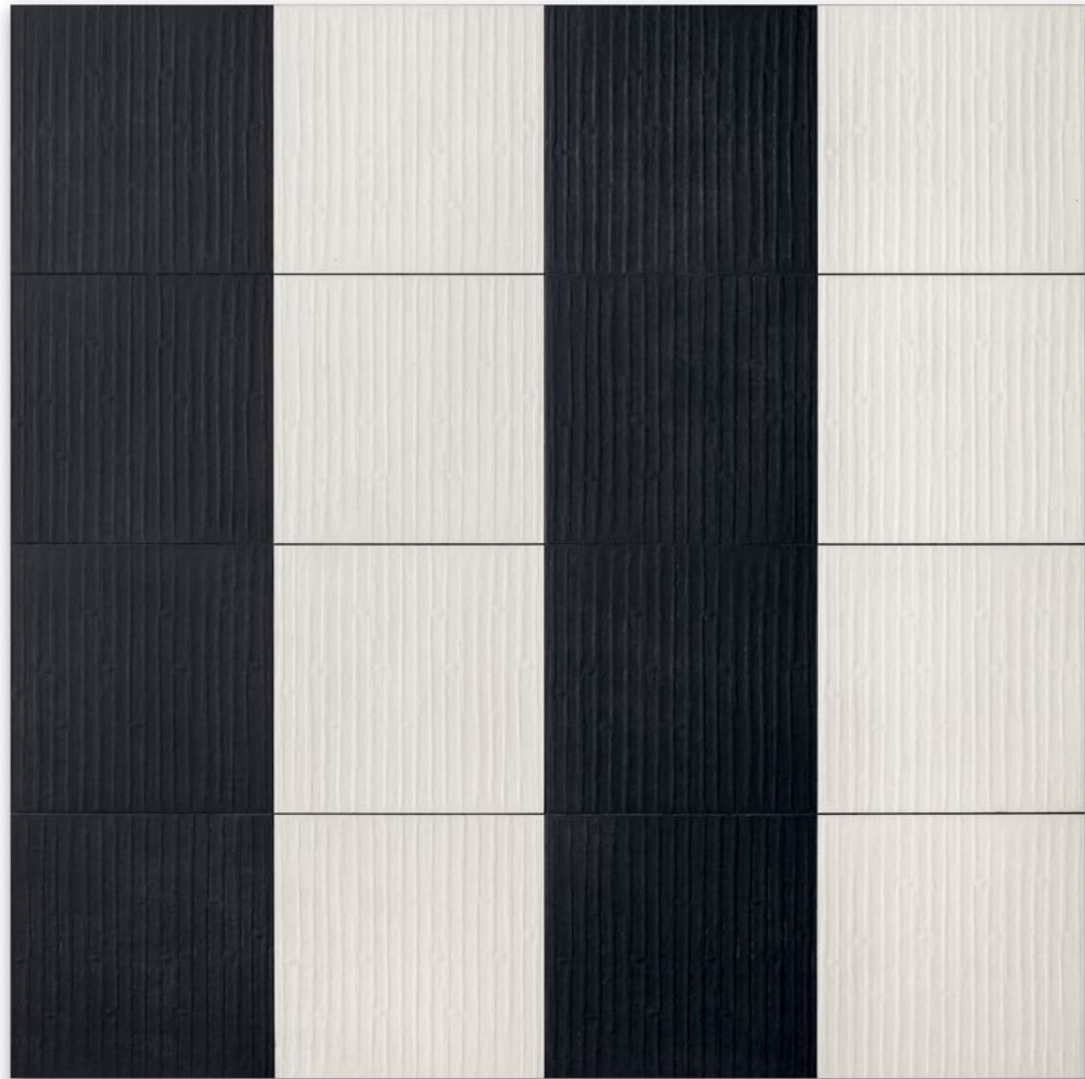












Technical Features

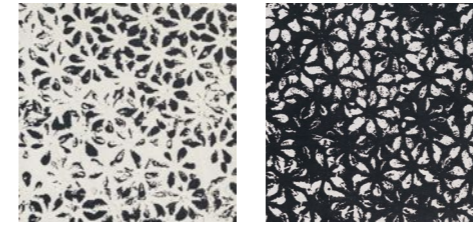
Sizes & Colors



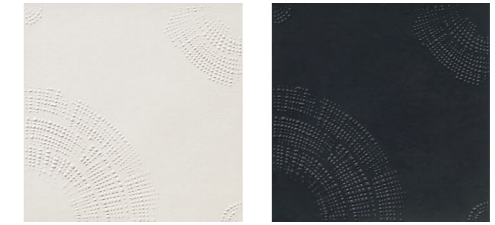
Flat White Flat Black



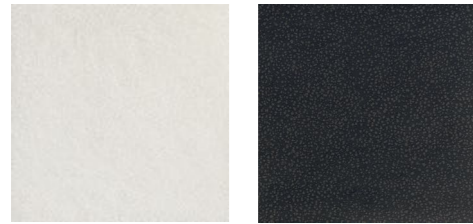
Rigo White Rigo Black



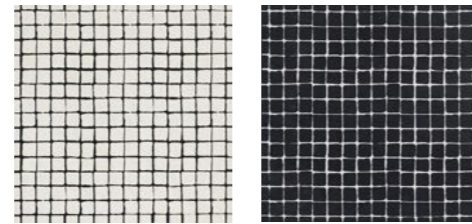
Bloom white Bloom Black



Drops White Drops Black



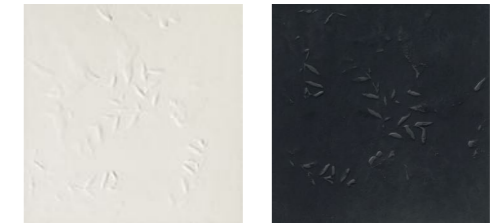
Frost White Frost Black



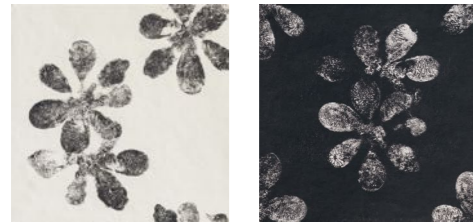
Tassello White Tassello Black



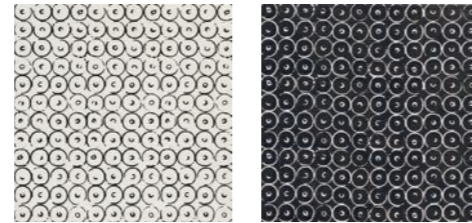
Juta White Juta Black



Impronta White Impronta Black



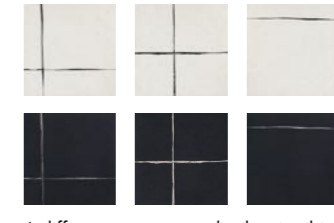
Ophelia White Ophelia Black



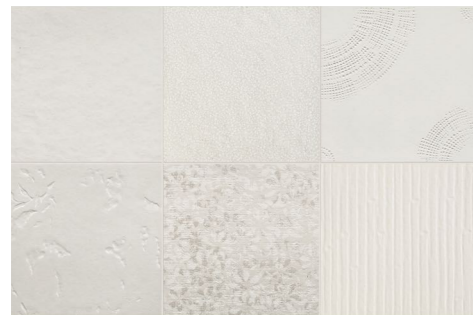
Cosmo White Cosmo Black



Teorema White * Teorema Black *



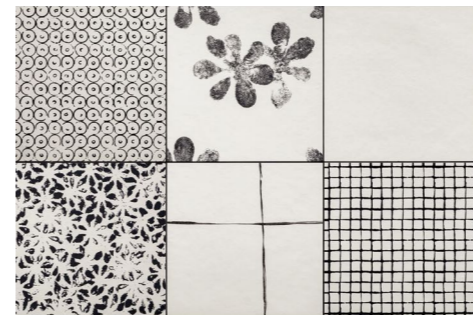
* different patterns randomly mixed into the box



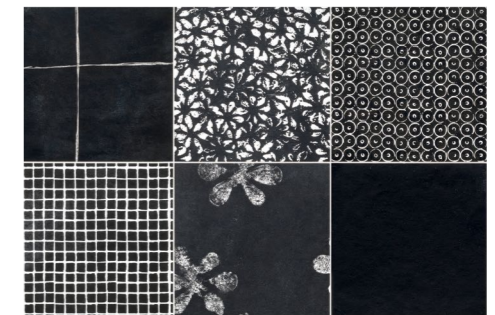
Mix 1 White



Mix 1 Black



Mix 2 White



Mix 2 Black



grout: black nero 06 grout: white calce 01



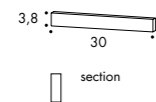
grout: black nero 06 grout: white calce 01

Sizes & Colors

collection	Chymia
design	Laboratorio Avallone, 2019
production	Industrial
material	Rectified glazed porcelain stoneware
thickness	10 mm
nominal sizes	30x30 cm
specification	The slight differences in the pattern among the pieces are intentional to obtain a never repetitive laying effect. The collection is: – 11 textures in White and Black – 4 mix, with 6 different items
complementary pieces	Skirting
patent	Registered design n° 007510870-0001/0040 – date of registration: 14/01/2020
category	UNI EN 14411 App G (BIA group) GL

complementary pieces

skirting
3,8-30 cm
1 1/2" x 12"



Technical features

STANDARD	FEATURES	VALUE REQUIRED	CHYMIA
ISO 10545/3	water absorption	< 0,5%	0,06%
ISO 10545/4	breaking strength	Sp> 7,5 min 1300	resistant
ISO 10545/9	thermal shock resistance	no alteration	no alteration
ISO 10545/12	frost resistance	no alteration	no alteration
ISO 10545/13	acids and alkalis resistance	min B	A
ISO 10545/14	stains resistance	class 3	class 5
DIN 51130-04	slip resistance	medium values 6÷10° R9 10÷19° R10 19÷27° R11 27÷35° R12 > 35° R13	R9 Flat R10
DIN 51097		–	A Flat B
DCOF		>0,42	> 0,59
Pendulum B57976-2		–	45 dry / 25 wet Flat 56 dry/ 42 wet
LEED 4.1		–	20%
Robinson Test			heavy use
VOC Emission			
Declaration of Contents			
SDS			
EPD			
BPD3			
HPD			

Packing

SIZE	PCS-SQM	PCS-BOX	SQM-BOX	BOX-PAL	KG-BOX	KG-PAL	SQM-PAL
30-30 cm	11,11	9	0,81	32	16,90	540,81	25,92
mix 30-30 cm	11,11	12	1,08	22	22,30	490,60	23,76
skirting 3,8-30 cm		20	6 ml		4,80		

Chymia è stata realizzata nel rispetto dell'ambiente e delle norme vigenti in materia di sostenibilità. Gli elementi in ceramica vengono infatti prodotti a partire da materie prime naturali di facile dismissione, con un ciclo di vita atteso di 50 anni, e sono in grado di resistere all'azione di prodotti chimici, condizioni atmosferiche esterne e situazioni di grave stress ambientale (incendi, allagamenti, umidità, variazioni di temperatura e raggi UV).

Numerosi sono gli aspetti produttivi considerati sia sotto il profilo della salvaguardia della salute che della qualità:

- L'impasto base utilizzato per le piastrelle ha un contenuto di materie prime riciclate pari al 20% calcolato come percentuale in peso (materiale riciclato post-consumo), secondo i requisiti UNI EN ISO 14021:2002 Environmental Label and Declarations (Type II environmental labelling) e LEED for New Construction & Major Renovations Rating System version 2.2-October 2005 (Green Building Council Italia – GBC e USGBC – U.S. Green Building Council).
- Gli imballi sono completamente riciclabili.
- La collezione è realizzata attraverso un procedimento produttivo in cui viene azzerata l'emissione di V.O.C. (Volatile Organic Compounds), sostanze chimiche volatili in grado di evaporare facilmente a temperatura ambiente (benzene, cloroformio, etanolo, butanolo e formaldeide), la cui esposizione prolungata in ambienti chiusi può provocare effetti sia acuti che cronici alla salute.
- Le piastrelle non contengono e non rilasciano, nelle condizioni di utilizzo, composti presenti nella Red List Building Materials e nella lista Substances of Very High Concern (SVHC) and Restricted Substances Declaration* come da Article 33 of Regulation (EC) No. 1907/2006 (REACH regulation e Annex 17).

Inoltre, Chymia presenta diversi vantaggi a livello di igiene e manutenzione. Il materiale è resistente, non assorbente e atossico; la pulizia della ceramica può essere effettuata con acqua calda e detergenti neutri, contribuendo alla riduzione del rischio di inquinamento dovuto all'utilizzo di prodotti chimici.

Chymia has been created with respect for the environment and the regulations in force governing sustainability. The ceramic elements are produced using natural raw materials that can be disposed of easily, have an expected life cycle of 50 years and are able to withstand the action of chemicals, outdoor weather conditions and situations of severe environmental stress (fires, flooding, humidity, temperature variations and UV rays).

Numerous manufacturing aspects have been considered with a view to both protecting health and guaranteeing quality:

- The base body used for the tiles has a 20% recycled raw material content, calculated as a percentage of weight (post-consumer recycled material), in accordance with the requisites of UNI EN ISO 14021:2002 Environmental Label and Declarations (Type II environmental labelling) and LEED for New Construction & Major Renovations Rating System version 2.2-October 2005 (Green Building Council Italia – GBC and USGBC – U.S. Green Building Council).
- Packaging is completely recyclable.
- The collection is made using a production process that reduces to zero the emission of V.O.C. (Volatile Organic Compounds), chemical substances (benzene, chloroform, ethanol, butanol and formaldehyde) that are able to evaporate easily at room temperature; prolonged exposure to these substances in a closed environment can have both acute and chronic effects on health.
- The tiles do not contain and when used do not release any of the compounds present on the Red List of Building Materials, the list of Substances of Very High Concern (SVHC) and the Restricted Substances Declaration*, as per Article 33 of Regulation (EC) No. 1907/2006 (REACH regulation and Annex 17).

In addition, Chymia offers a number of advantages in terms of hygiene and maintenance. The material is resistant, non-absorbent and non-toxic; ceramic material can be cleaned with warm water and neutral detergents, thus helping to reduce the risk of pollution due to the use of chemical products.



La ricerca di Laboratorio Avallone si sviluppa sul terreno multidisciplinare delle arti applicate, dove coniuga i linguaggi di pittura e scultura per dare vita a oggetti e componenti d'arredo unici e speciali. Segno distintivo della produzione, che costituisce un fattore di riconoscibilità a livello internazionale, è la propensione a lavorare con superfici segnate da una profonda matericità, incise e stampate, che invitano a entrare in diretto contatto con la materia. Epicentro creativo del team è Gennaro Avallone, maestro e sperimentatore, che da più di venticinque anni esplora i confini e le possibilità delle superfici, portando avanti uno studio rivolto all'eccellenza. Laboratorio Avallone collabora con Mutina nella creazione di due nuovi progetti che mettono in risalto le caratteristiche intrinseche del suo stile: Chymia, collezione ceramica incentrata su uno studio inedito del bianco e del nero, e The Cylinder Glass, prima edizione limitata dell'azienda con un focus sul vetro di Murano rivisto in chiave contemporanea.

The research carried out by Laboratorio Avallone reaches into the applied arts, drawing on the arts of painting and sculpture to create unique and very special objects of contemporary furnishing. A defining characteristic of these products, which has led to their international fame, is the inclination to use surfaces with very distinctive and deep textures, both engraved and embossed, highlighting the material itself. The epicentre of the design team is Gennaro Avallone, a master and experimenter, who for over twenty-five years has been continually exploring the limits and possibilities of surfaces with meticulous research that strives to create excellence. Laboratorio Avallone is now working with Mutina to create two new projects that bring out the characteristics of Gennaro's style: Chymia, a ceramic collection that focuses on original research into black and white, and The Cylinder Glass Collection, Mutina's first limited edition that focuses on Murano glass interpreted in a contemporary vein.



CREDITS

Art direction: Alla Carta Studio
Graphic design: Matteo Pastorio
Text: Gennaro Avallone and Mutina
Photography: Mado Fotografia (p.8-11,40-55)
Images: Germano Schillaci (p.14-37)
Illustration: Damien Florébert Cuypers
Catalogue update: June 2020.

All the rights are reserved.
Not any part of this work can be reproduced
in any way without the preventive written
authorization by Mutina. All work is
copyrighted © to their respective owners.

To discover more about Mutina
collections visit mutina.it

Ceramiche Mutina Spa
Via Ghiarola Nuova 16
41042 Fiorano MO, Italia
T +39 0536812800
F +39 0536812808
info@mutina.it
www.mutina.it

© Mutina 2020

